

Established GIS Group

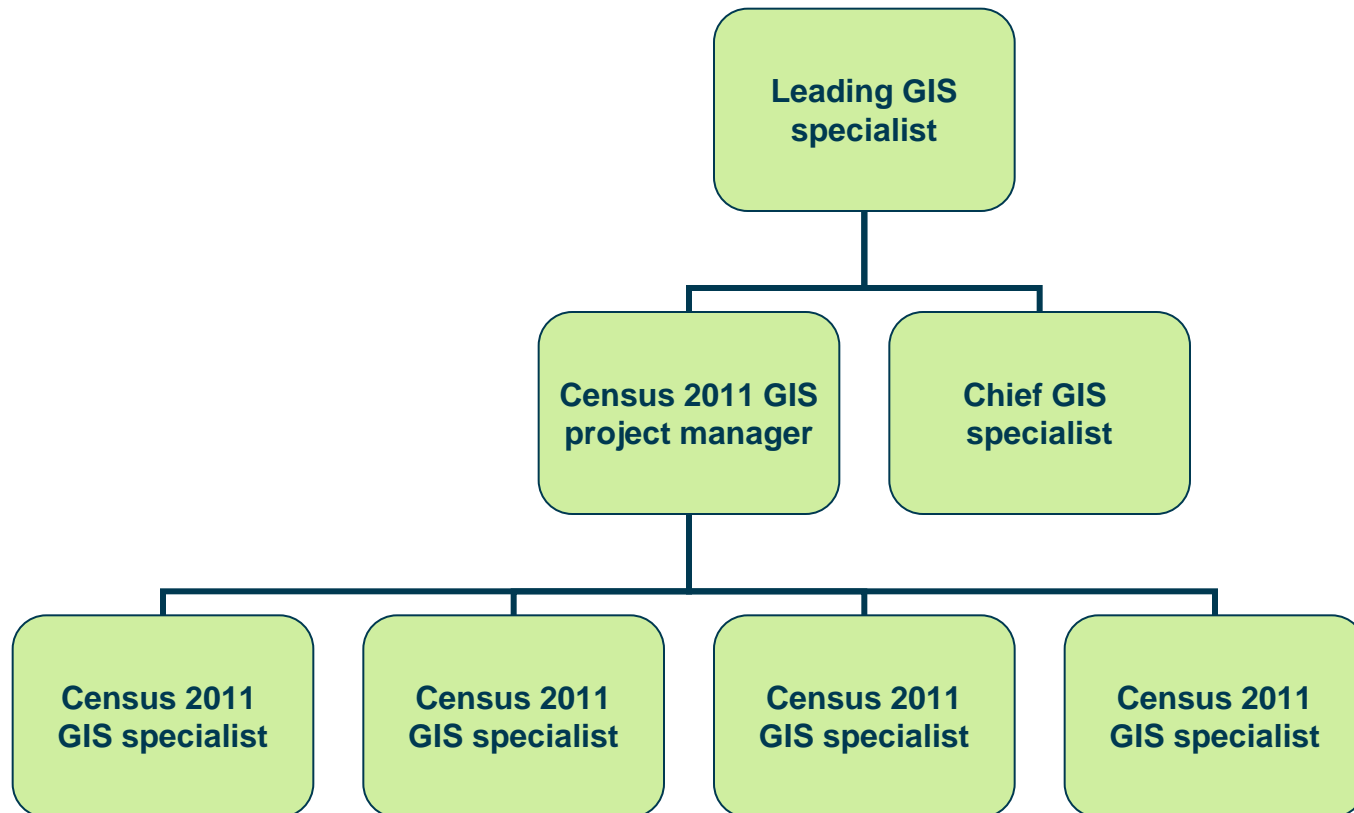
Kreet Masik



Structure of the Team

- 1 leading GIS specialist;
- 1 chief GIS specialist;
- 1 Census 2011 GIS project manager;
- 3 Census 2011 GIS specialists at the moment (later 4).

Structure of the Team



Skills of the Team

- Skills in using ArcGIS software;
- Master's degree, preferably in geoinformatics/ cartography or geography;
- Skills in using different database systems;
- General knowledge about geoinformatics;
- Knowledge about spatial data and spatial databases used in Estonia;
- Previous working experience in GIS related areas;

Skills of the Team

- Good English language skills;
- Ability to think in spatial terms;
- Ability to co-operate;
- Ability to teach others;
- Capability to work to a deadline;
- Personal qualities: accuracy, sense of duty, communicative skills.



Main tasks of the leading GIS specialist

- To determine the division of labour within the GIS group and manage all GIS related tasks;
- To analyze the needs of employees in Statistics Estonia, and based on them, work out trends in geoinformatics;
- To analyze user needs for georeferenced statistics and evolve geoservices in compliance with these needs;
- To manage different geoinformatic development projects;



Main tasks of the leading GIS specialist

- To introduce geoinformatics and the related possibilities to other employees in Statistics Estonia;
- To be aware of laws (national and international) that regulate spatial data collection, management, development and dissemination;
- To improve co-operation with other Estonian national agencies;
- To improve co-operation with other GIS departments in National Statistical Offices and participate in international GIS projects.

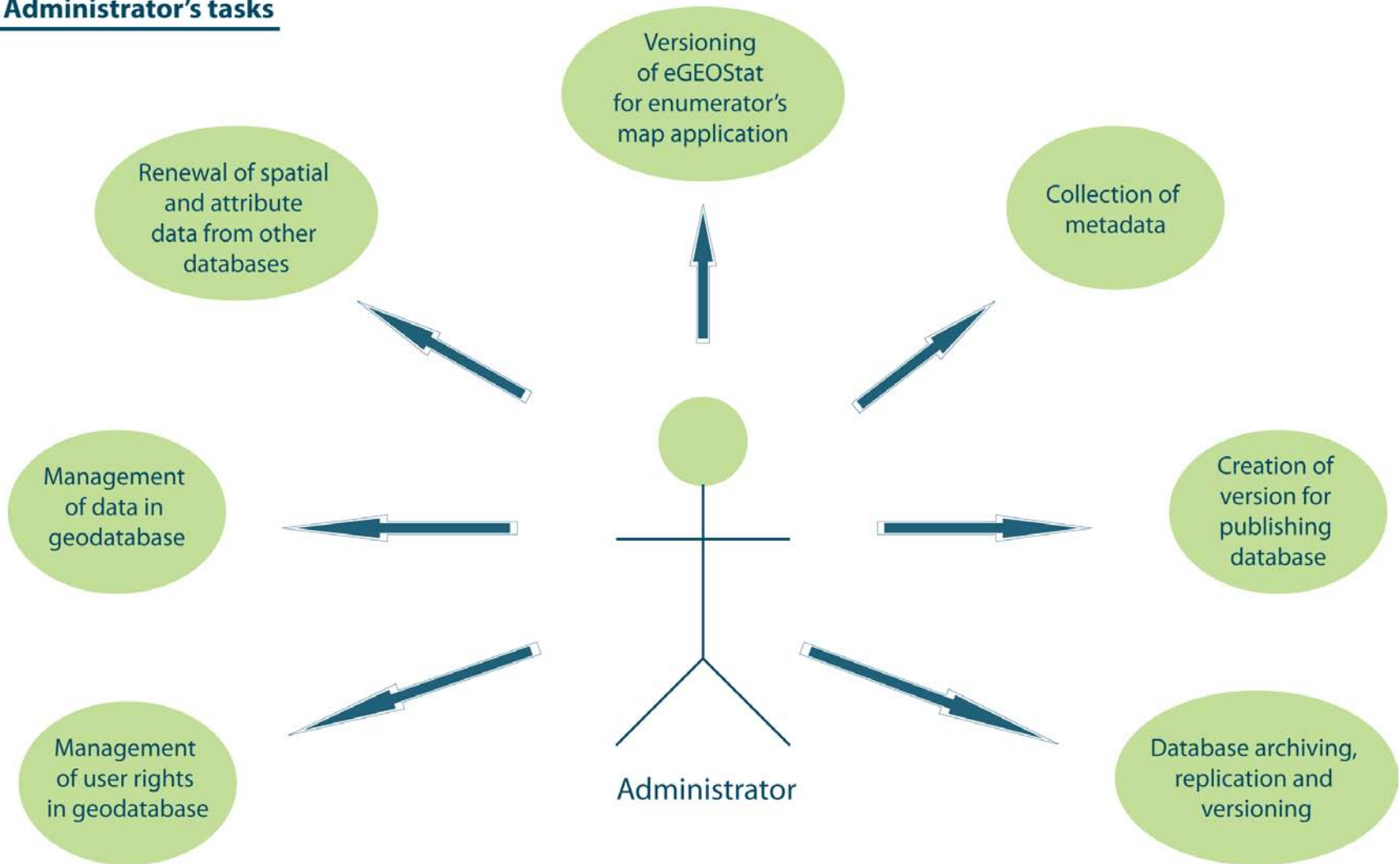
Main tasks of the Census 2011 GIS project manager

- To lead Census 2011 related GIS projects and supervise all Census 2011 GIS specialists;
- To ensure GIS functionality during the 2011 Census;
- To ensure that Census 2000 results can be associated with Census 2011 results;
- To ensure that all Census 2011 results can be georeferenced;
- To ensure means for the Census 2011 GIS.

Main tasks of the Census 2011 GIS project manager

- To develop the Census 2011 output and geoservices in co-operation with the leading GIS specialist;
- To participate in the establishment, development and management of the Census 2011 related GI-systems;
- To compile the Census 2011 GIS project plan and budget, and specify GIS resources;
- To administer eGEOStat (Estonian geostatistical database).

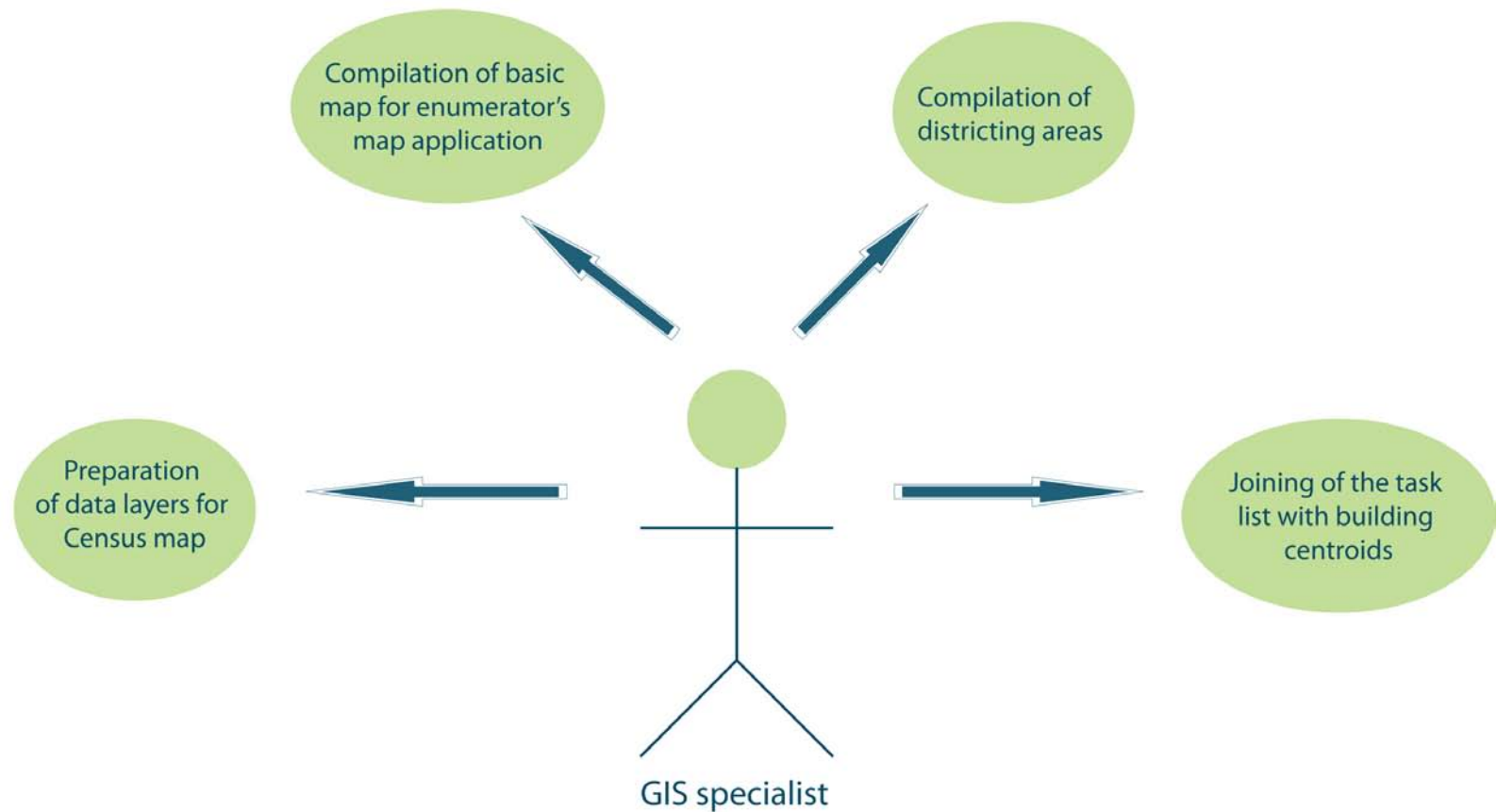
Administrator's tasks



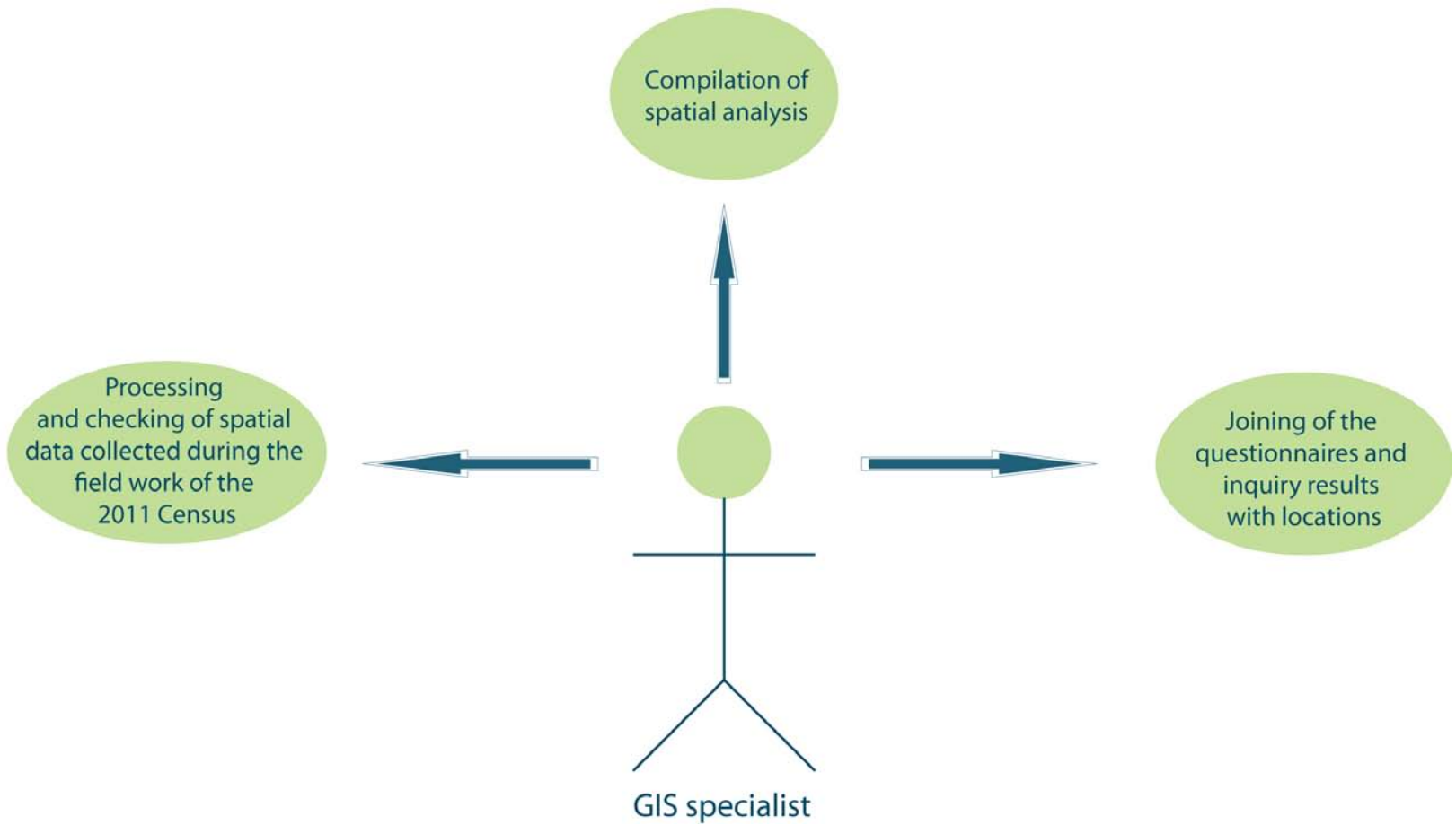
Main tasks of the Census 2011 GIS specialists

- To collect and manage Census 2011 related spatial data;
- To check data quality (time relevance, positional accuracy, completeness, etc.) after Census 2011;
- To compile training materials and carry out GIS training for enumerators;
- To test different web-based and desktop map applications.

GIS specialist's tasks (before the Census)



GIS specialist's tasks (after the Census)

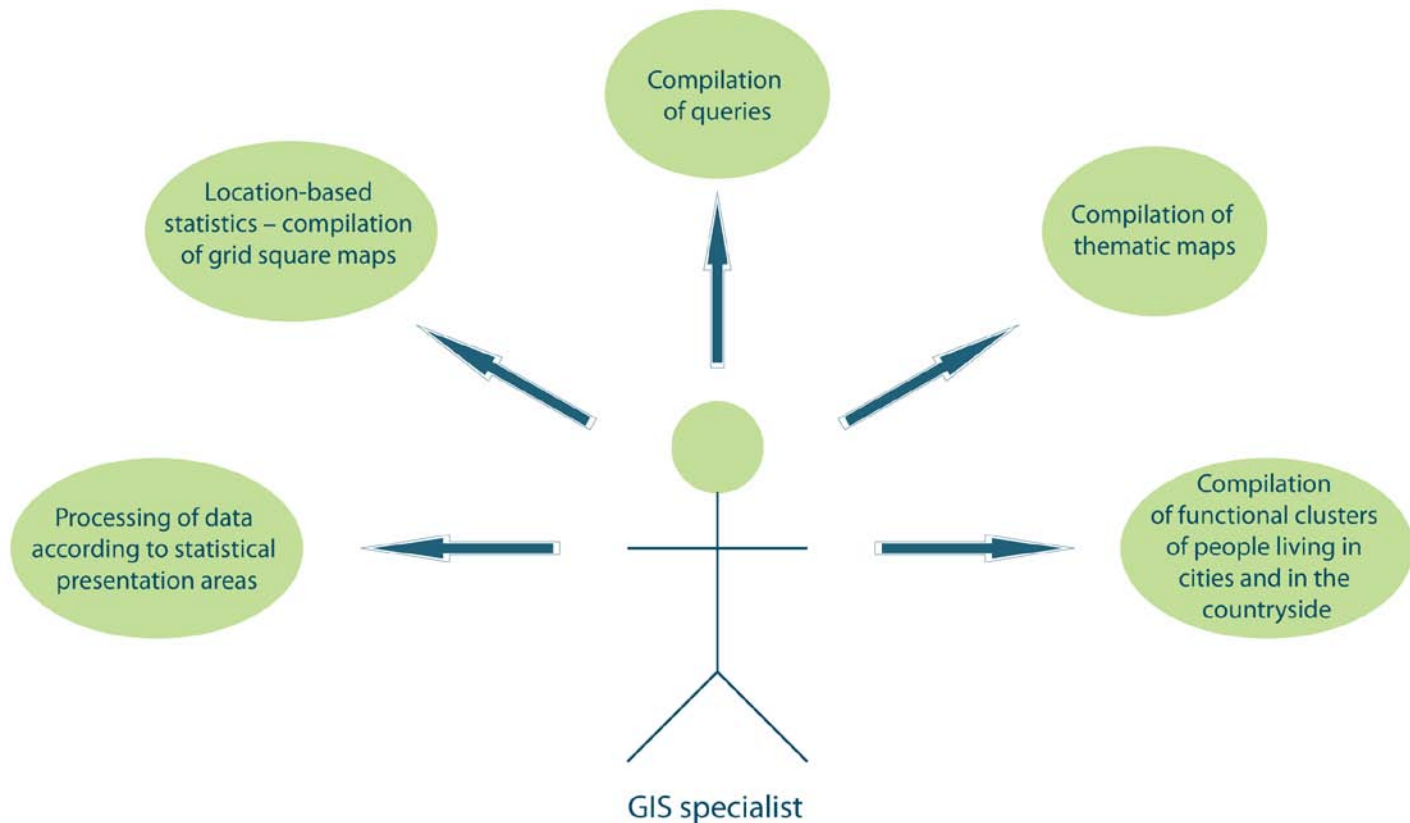


Main tasks of the chief GIS specialist

- To compile various thematic maps for customers;
- To participate in the development of thematic maps;
- To participate in the development of interactive thematic maps and compile these maps;
- To participate in organizing different GIS-specific events;
- To compile and document the spatial data metainfo;
- To compile spatial data-specific products;
- To compile spatial queries;
- To compile digital GRID-based population data.

Main tasks of the chief GIS specialist

GIS specialist's tasks (analysis after the Census)



Tasks during the 2011 Census

- To clean data after the e-Census;
- To answer to error reports;
- To provide continuous support for users (persons participating in e-Census and enumerators during the Census);
- To administer eGEOStat during the Census;

Equipment Used by the Team

- 1 ArcInfo Licence (Floating);
- 4 ArcEditor Licences (Floating);
- 2 ArcView Licences (Single);
- 2 Spatial Analyst Licences (Floating);
- 1 Network Analyst Licence (Floating);
- ArcGIS Server Enterprise Advanced;
- Districting for ArcGIS;
- INSPIRE Metadata Editor.

Thank you!

