



Welcome by National Land Survey of Finland  
Director General Arvo Kokkonen

# About international cooperation



## **United Nations Global Geospatial Information Management (UN-GGIM)**

- Expert Group on the Sustainable Development Goal Indicators Working Group on Geospatial Information
- Expert Group on the Integration of Statistical and Geospatial Information

## **UN-GGIM: Europe**

- Work Group Data Integration

## **EuroGeographics**

- the association of European National Mapping, Cadastral and Land Registration Authorities

## **UNECE**

- activities on the integration of statistical and geospatial information

*Last day of the conference - a Panel discussion “A way forward”*



# In Finland we are working towards a greater use of Geospatial information and making data easily available

## Report on Spatial Data Policy

- vision of the report: Finland has the most innovative and secure spatial data ecosystem in the world
- report is going through the Parliamentary process



# NLS Finland is actively working towards a greater use of geospatial information and making data easily available

## NLS Finland started to open data in 2012

- currently practically all our data is open and available free of charge to all users

## MapSite since 1996

<https://www.maanmittauslaitos.fi/en/e-services/mapsite>

## The Finnish Geoportal Paikkatietoikkuna

<https://kartta.paikkatietoikkuna.fi/?lang=en>



# NLS Finland's contribution to the Conference Programme



- ✓ **The Geospatial Platform in Finland**
- ✓ **OGC Table Joining Service**
- ✓ **Oskari**
  - versatile open source package for creating web map services and embedded maps
- ✓ **Arctic Spatial Data Infrastructure**
  - using OSKARI



Arctic Spatial  
Data Infrastructure

SEARCH

MAP LAYERS

SELECTED LAYERS 2

MY DATA

MAP PUBLISHING

MAP LEGENDS

USER GUIDE

THEMATIC MAPS



[Account](#)

[Logout](#)

500 km

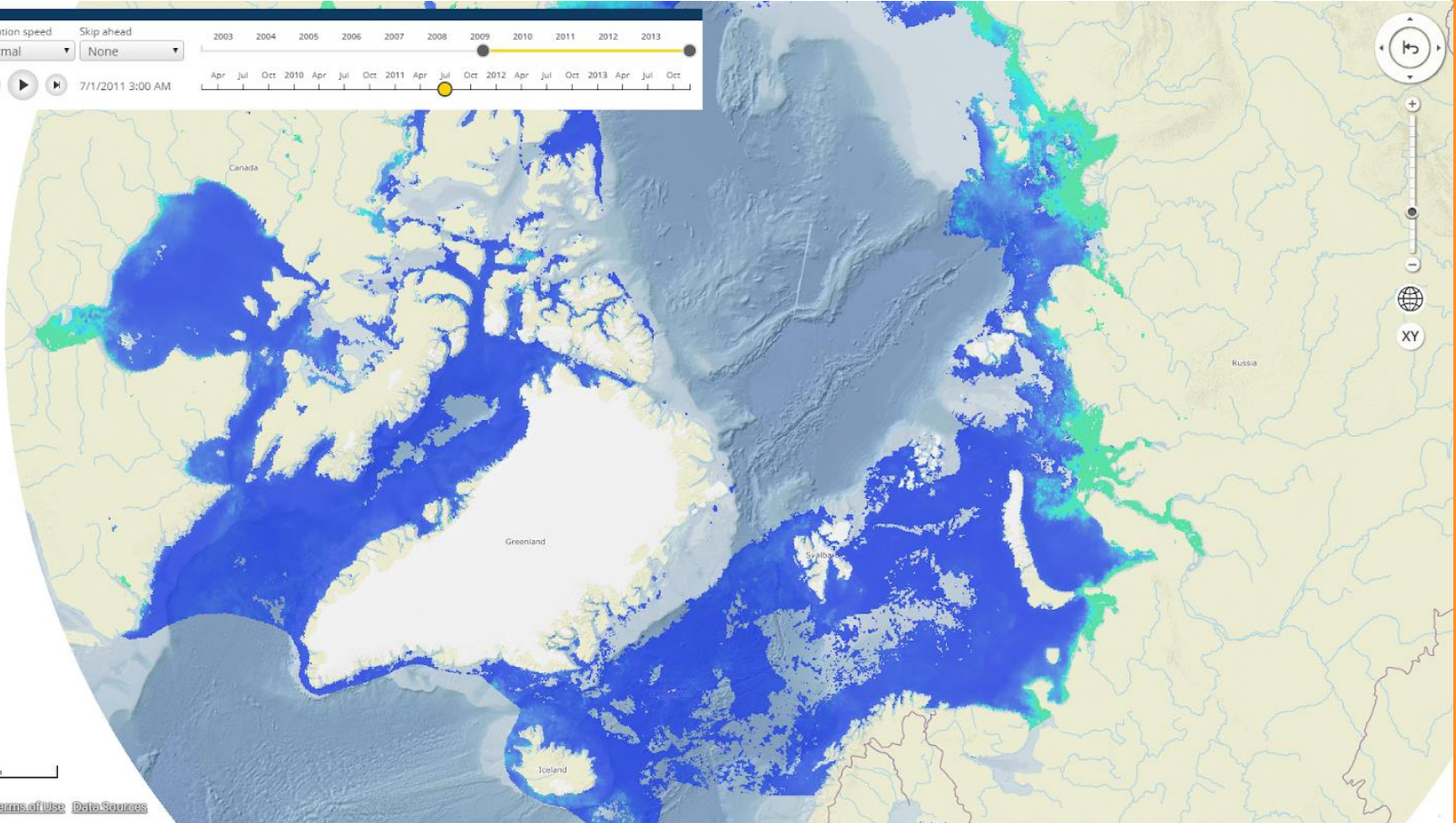
[Terms of Use](#) [Data Sources](#)

Animation speed:  Skip ahead:

Timeline: 2003 2004 2005 2006 2007 2008 2009 2010 2011 2012 2013

Timeline: Apr Jul Oct 2010 Apr Jul Oct 2011 Apr Jul Oct 2012 Apr Jul Oct 2013 Apr Jul Oct

7/1/2011 3:00 AM



## Create Embedded Map

### Basic settings

Website address (without http and www prefixes)

Map name (required)

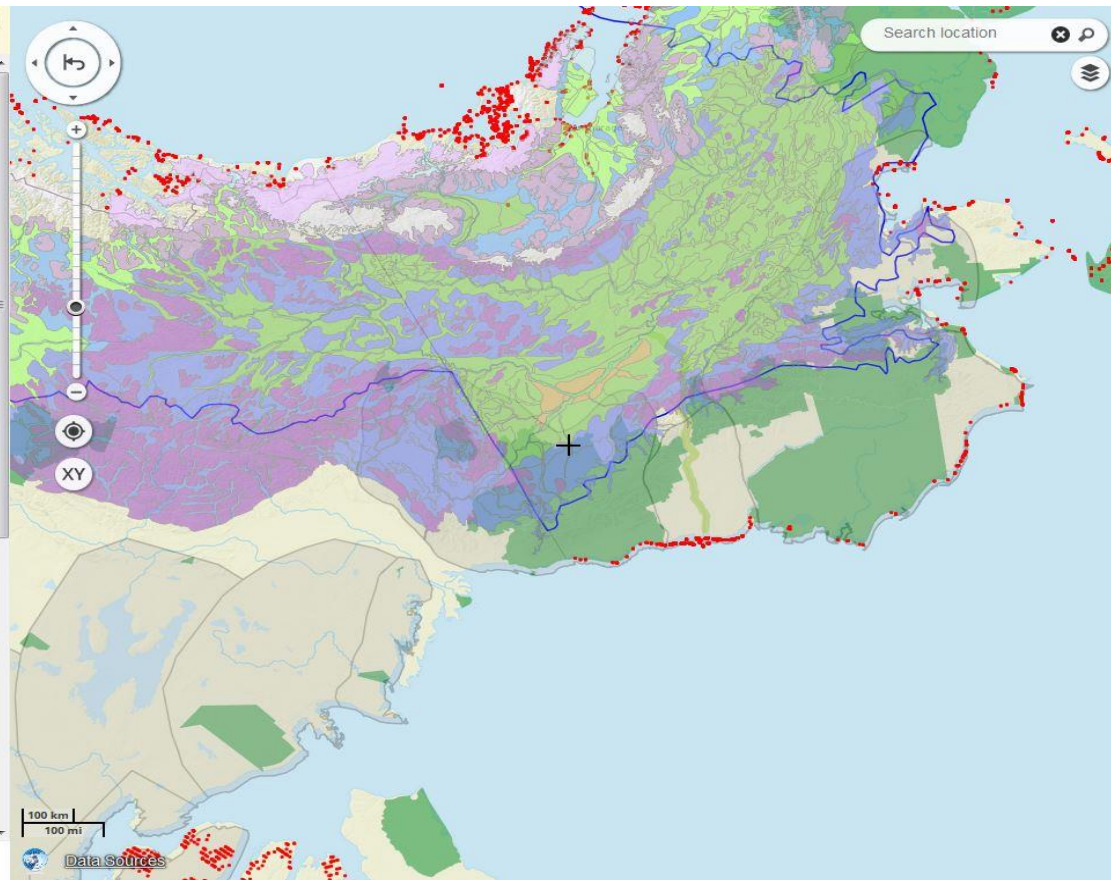
Language

### Map Size

### Map Layers

### Tools

- Scale bar
- Index map
- Map layers menu  
Select the background map layer. You can select the default background map layer in the map preview.
  - Arctic SDI Background Map
  - Protected Areas
  - AMAP Boundary
  - Caribou herds 2014
  - CAFF CBird
  - BioClimate Map Alaska-Yukon
- Pan tool
- Map tools
- Zoom bar
- Coordinate tool
- Hide user interface (Use RPC interface)
- Center to location



# SHOWING THE WAY

