



An Phríomh-Oifig Staidrimh
Central Statistics Office

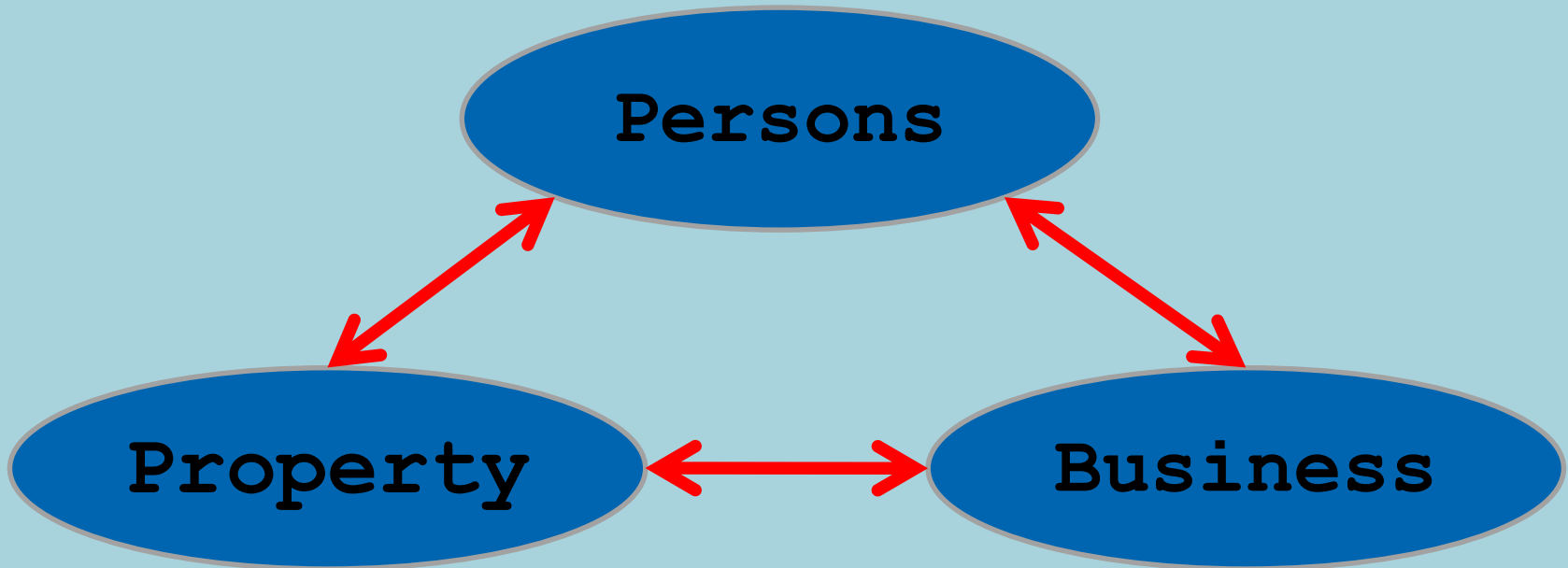
Statistics and Geography; the value of co-operation

Paul Morrin
Assistant Director General
Central Statistics Office

EFGS, November, 2017



The National Data Infrastructure (NDI)



Key : Permanent official identification

Rationale for a National Data Infrastructure

http://ipa.ie/pdf/Forum_Vol_61_4.pdf



Challenges for Official statistics

- Relevance to key customer groups
- Competition – web services, ‘fake news’
- Staff recruitment and retention
- Gaining benefit from secondary data sources
- Benefits from co-operation clear!



Co-operation in Ireland

- Traditionally for Census – crucial for survey taking and also for setting admin. boundaries
- Now much deeper relationship
- Open data for boundaries
- Local area profiles
- Now SDG open data site – Colin's presentation

Traditional Census presentation

Census 2011 – Population Classified by Area

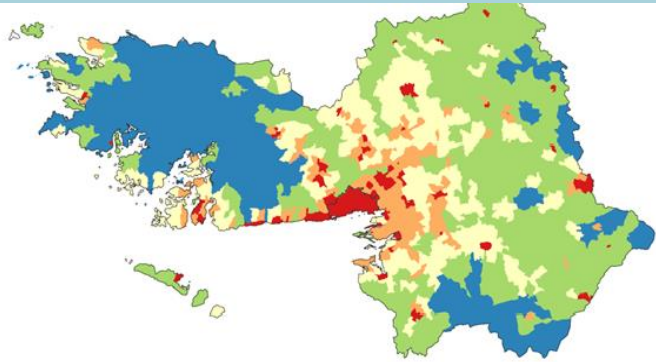
Table 1 Population of each province, county and city with actual and percentage change, 2006 and 2011

Province, county and city	2006	2011		Actual change 2006 - 2011	Percentage change 2006 - 2011	
	Persons	Persons	Males			Females
Leinster	2,295,123	2,504,814	1,233,352	1,271,462	209,691	9.1
Carlow	50,349	54,612	27,431	27,181	4,263	8.5
Dublin	1,187,176	1,273,069	619,902	653,167	85,893	7.2
<i>of which</i>						
Dublin City	506,211	527,612	257,303	270,309	21,401	4.2
Dún Laoghaire-Rathdown	194,038	206,261	98,567	107,694	12,223	6.3
Fingal	239,992	273,991	134,488	139,503	33,999	14.2
South Dublin	246,935	265,205	129,544	135,661	18,270	7.4
Kildare	186,335	210,312	104,658	105,654	23,977	12.9
Kilkenny	87,558	95,419	47,788	47,631	7,861	9.0
Laois	67,059	80,559	40,587	39,972	13,500	20.1
Longford	34,391	39,000	19,649	19,351	4,609	13.4
Louth	111,267	122,897	60,763	62,134	11,630	10.5
Meath	162,831	184,135	91,910	92,225	21,304	13.1
Offaly	70,868	76,687	38,430	38,257	5,819	8.2
Westmeath	79,346	86,164	42,783	43,381	6,818	8.6
Wexford	131,749	145,320	71,909	73,411	13,571	10.3
Wicklow	126,194	136,640	67,542	69,098	10,446	8.3



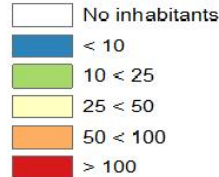
Using GIS effectively

Small
Areas

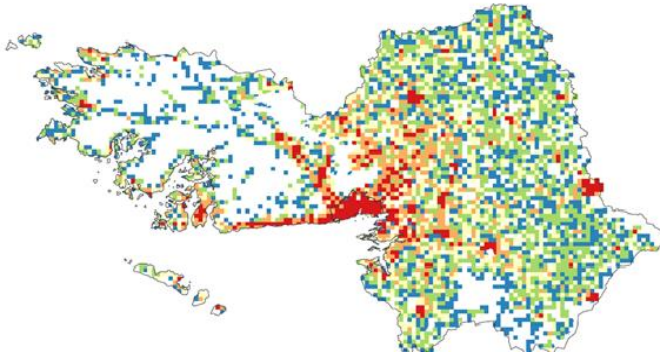


Census 2011
Population
density

Persons per Km²



1 Km²
Grid cells



Coastal Living

40,000 people
live less than
100 metres from
the coast

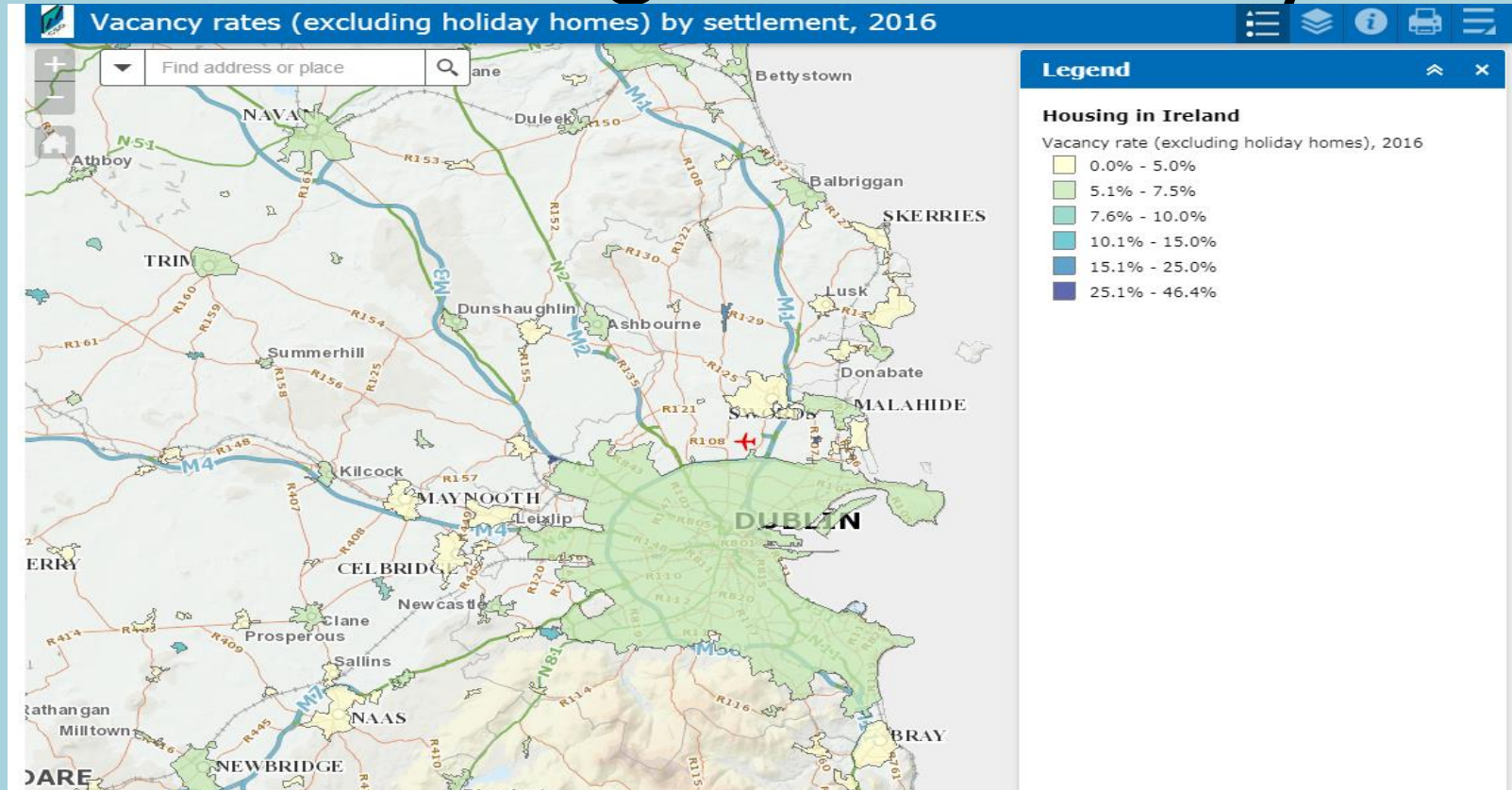


1.9 million people
live within 5km
of the coast or
40% of population





Using GIS effectively





How we can work together

