

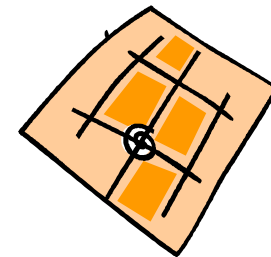
Producing grid data in the new production environment

Nordic Forum for Geostatistics 2007

Session 3, GI infrastructure and use of spatial database

Rina Tammisto

Statistics Finland, Population Statistics



Topics

- 1) The new production environment and what is new in the grid producing method
- 2) What are the advantages of the new way
- 3) What are the next steps in the development work

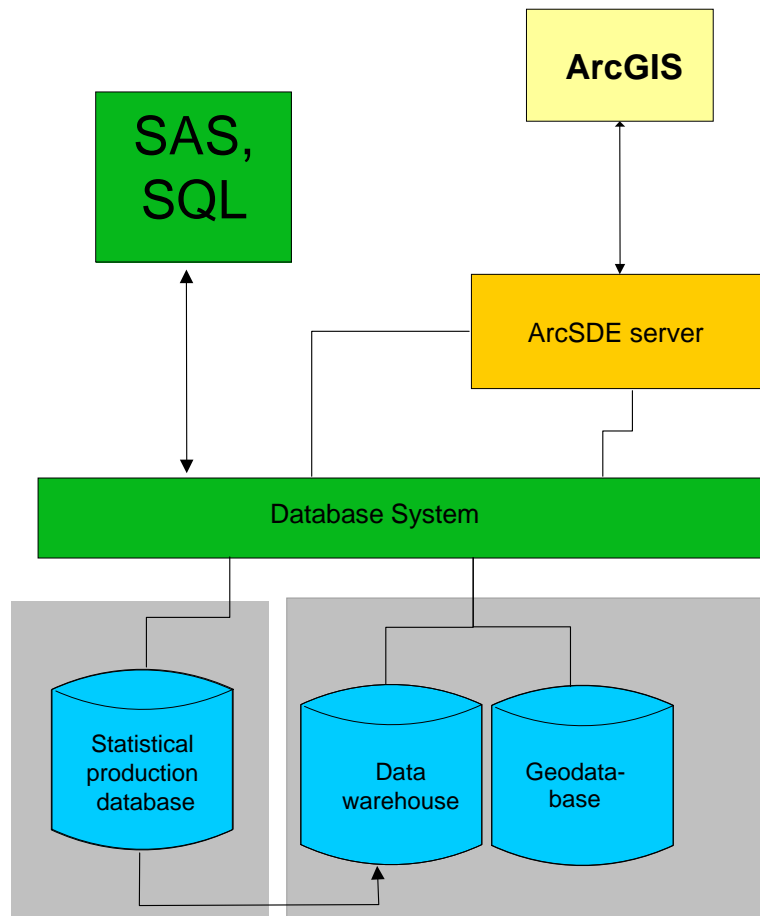
1) The new production environment and what is new in the grid producing method

■ Environmental renewals

- Use of geodatabase
- Use of data warehouse
- More intensive use of SAS

■ Effects on data

- New structure of data - Buildings at the core



Grid production environment

- Database; SQL Server database
- Data compilation; with e.g. SAS or SQL
- Spatiality; ESRI ArcSDE

The former way of handling spatiality of single unit data

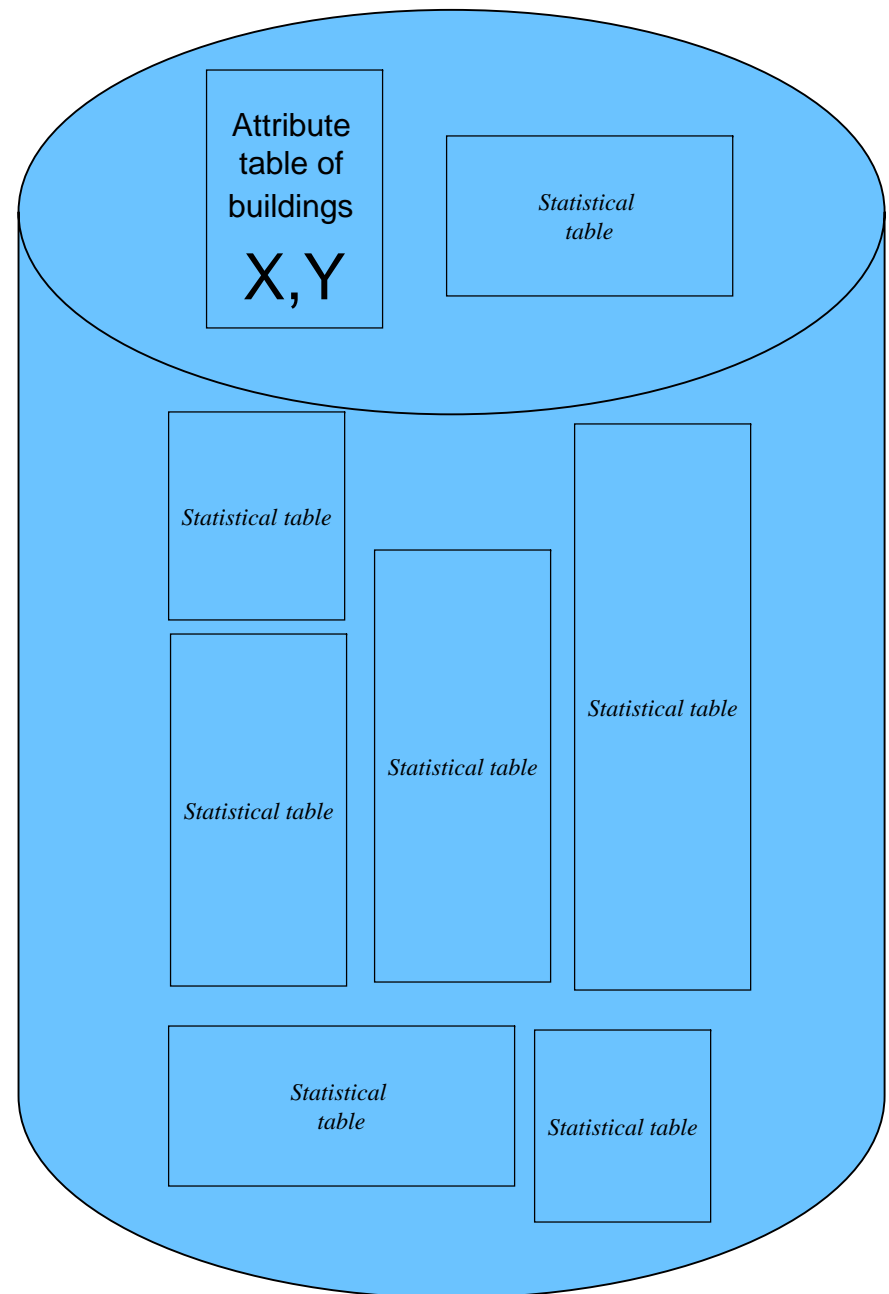
- Separate statistics - separate files
- Separate years - separate files
- Spatiality differs in the separate files and years

2000	04 7760	Kuopio	555	2004	505	1	01	011	01	01	2	1
2001	04 9400	Kanta	555	2004	505	1	01	011	01	01	2	1
2002	04 7760	Kuopio	555	2004	505	1	01	011	01	01	2	1
2003	04 7760	Kuopio	555	2004	505	1	01	011	01	01	2	1
2004	04 7760	Kuopio	555	2004	505	1	01	011	01	01	2	1
2005	04 7760	Kuopio	555	2004	505	1	01	011	01	01	2	1
2006	04 7760	Kuopio	555	2004	505	1	01	011	01	01	2	1
2007	04 7760	Kuopio	555	2004	505	1	01	011	01	01	2	1
2008	04 7760	Kuopio	555	2004	505	1	01	011	01	01	2	1
2009	04 7760	Kuopio	555	2004	505	1	01	011	01	01	2	1
2010	04 7760	Kuopio	555	2004	505	1	01	011	01	01	2	1
2011	04 7760	Kuopio	555	2004	505	1	01	011	01	01	2	1
2012	04 7760	Kuopio	555	2004	505	1	01	011	01	01	2	1
2013	04 7760	Kuopio	555	2004	505	1	01	011	01	01	2	1
2014	04 7760	Kuopio	555	2004	505	1	01	011	01	01	2	1
2015	04 7760	Kuopio	555	2004	505	1	01	011	01	01	2	1
2016	04 7760	Kuopio	555	2004	505	1	01	011	01	01	2	1
2017	04 7760	Kuopio	555	2004	505	1	01	011	01	01	2	1
2018	04 7760	Kuopio	555	2004	505	1	01	011	01	01	2	1
2019	04 7760	Kuopio	555	2004	505	1	01	011	01	01	2	1
2020	04 7760	Kuopio	555	2004	505	1	01	011	01	01	2	1
2021	04 7760	Kuopio	555	2004	505	1	01	011	01	01	2	1
2022	04 7760	Kuopio	555	2004	505	1	01	011	01	01	2	1
2023	04 7760	Kuopio	555	2004	505	1	01	011	01	01	2	1
2024	04 7760	Kuopio	555	2004	505	1	01	011	01	01	2	1
2025	04 7760	Kuopio	555	2004	505	1	01	011	01	01	2	1
2026	04 7760	Kuopio	555	2004	505	1	01	011	01	01	2	1
2027	04 7760	Kuopio	555	2004	505	1	01	011	01	01	2	1
2028	04 7760	Kuopio	555	2004	505	1	01	011	01	01	2	1
2029	04 7760	Kuopio	555	2004	505	1	01	011	01	01	2	1
2030	04 7760	Kuopio	555	2004	505	1	01	011	01	01	2	1
2031	04 7760	Kuopio	555	2004	505	1	01	011	01	01	2	1
2032	04 7760	Kuopio	555	2004	505	1	01	011	01	01	2	1
2033	04 7760	Kuopio	555	2004	505	1	01	011	01	01	2	1
2034	04 7760	Kuopio	555	2004	505	1	01	011	01	01	2	1
2035	04 7760	Kuopio	555	2004	505	1	01	011	01	01	2	1
2036	04 7760	Kuopio	555	2004	505	1	01	011	01	01	2	1
2037	04 7760	Kuopio	555	2004	505	1	01	011	01	01	2	1
2038	04 7760	Kuopio	555	2004	505	1	01	011	01	01	2	1
2039	04 7760	Kuopio	555	2004	505	1	01	011	01	01	2	1
2040	04 7760	Kuopio	555	2004	505	1	01	011	01	01	2	1
2041	04 7760	Kuopio	555	2004	505	1	01	011	01	01	2	1
2042	04 7760	Kuopio	555	2004	505	1	01	011	01	01	2	1
2043	04 7760	Kuopio	555	2004	505	1	01	011	01	01	2	1
2044	04 7760	Kuopio	555	2004	505	1	01	011	01	01	2	1
2045	04 7760	Kuopio	555	2004	505	1	01	011	01	01	2	1
2046	04 7760	Kuopio	555	2004	505	1	01	011	01	01	2	1
2047	04 7760	Kuopio	555	2004	505	1	01	011	01	01	2	1
2048	04 7760	Kuopio	555	2004	505	1	01	011	01	01	2	1
2049	04 7760	Kuopio	555	2004	505	1	01	011	01	01	2	1
2050	04 7760	Kuopio	555	2004	505	1	01	011	01	01	2	1
2051	04 7760	Kuopio	555	2004	505	1	01	011	01	01	2	1
2052	04 7760	Kuopio	555	2004	505	1	01	011	01	01	2	1
2053	04 7760	Kuopio	555	2004	505	1	01	011	01	01	2	1
2054	04 7760	Kuopio	555	2004	505	1	01	011	01	01	2	1
2055	04 7760	Kuopio	555	2004	505	1	01	011	01	01	2	1
2056	04 7760	Kuopio	555	2004	505	1	01	011	01	01	2	1
2057	04 7760	Kuopio	555	2004	505	1	01	011	01	01	2	1
2058	04 7760	Kuopio	555	2004	505	1	01	011	01	01	2	1
2059	04 7760	Kuopio	555	2004	505	1	01	011	01	01	2	1
2060	04 7760	Kuopio	555	2004	505	1	01	011	01	01	2	1
2061	04 7760	Kuopio	555	2004	505	1	01	011	01	01	2	1
2062	04 7760	Kuopio	555	2004	505	1	01	011	01	01	2	1
2063	04 7760	Kuopio	555	2004	505	1	01	011	01	01	2	1
2064	04 7760	Kuopio	555	2004	505	1	01	011	01	01	2	1
2065	04 7760	Kuopio	555	2004	505	1	01	011	01	01	2	1
2066	04 7760	Kuopio	555	2004	505	1	01	011	01	01	2	1
2067	04 7760	Kuopio	555	2004	505	1	01	011	01	01	2	1
2068	04 7760	Kuopio	555	2004	505	1	01	011	01	01	2	1
2069	04 7760	Kuopio	555	2004	505	1	01	011	01	01	2	1
2070	04 7760	Kuopio	555	2004	505	1	01	011	01	01	2	1
2071	04 7760	Kuopio	555	2004	505	1	01	011	01	01	2	1
2072	04 7760	Kuopio	555	2004	505	1	01	011	01	01	2	1
2073	04 7760	Kuopio	555	2004	505	1	01	011	01	01	2	1
2074	04 7760	Kuopio	555	2004	505	1	01	011	01	01	2	1
2075	04 7760	Kuopio	555	2004	505	1	01	011	01	01	2	1
2076	04 7760	Kuopio	555	2004	505	1	01	011	01	01	2	1
2077	04 7760	Kuopio	555	2004	505	1	01	011	01	01	2	1
2078	04 7760	Kuopio	555	2004	505	1	01	011	01	01	2	1
2079	04 7760	Kuopio	555	2004	505	1	01	011	01	01	2	1
2080	04 7760	Kuopio	555	2004	505	1	01	011	01	01	2	1
2081	04 7760	Kuopio	555	2004	505	1	01	011	01	01	2	1
2082	04 7760	Kuopio	555	2004	505	1	01	011	01	01	2	1
2083	04 7760	Kuopio	555	2004	505	1	01	011	01	01	2	1
2084	04 7760	Kuopio	555	2004	505	1	01	011	01	01	2	1
2085	04 7760	Kuopio	555	2004	505	1	01	011	01	01	2	1
2086	04 7760	Kuopio	555	2004	505	1	01	011	01	01	2	1
2087	04 7760	Kuopio	555	2004	505	1	01	011	01	01	2	1
2088	04 7760	Kuopio	555	2004	505	1	01	011	01	01	2	1
2089	04 7760	Kuopio	555	2004	505	1	01	011	01	01	2	1
2090	04 7760	Kuopio	555	2004	505	1	01	011	01	01	2	1
2091	04 7760	Kuopio	555	2004	505	1	01	011	01	01	2	1
2092	04 7760	Kuopio	555	2004	505	1	01	011	01	01	2	1
2093	04 7760	Kuopio	555	2004	505	1	01	011	01	01	2	1
2094	04 7760	Kuopio	555	2004	505	1	01	011	01	01	2	1
2095	04 7760	Kuopio	555	2004	505	1	01	011	01	01	2	1
2096	04 7760	Kuopio	555	2004	505	1	01	011	01	01	2	1
2097	04 7760	Kuopio	555	2004	505	1	01	011	01	01	2	1
2098	04 7760	Kuopio	555	2004	505	1	01	011	01	01	2	1
2099	04 7760	Kuopio	555	2004	505	1	01	011	01	01	2	1
2100	04 7760	Kuopio	555	2004	505	1	01	011	01	01	2	1
2101	04 7760	Kuopio	555	2004	505	1	01	011	01	01	2	1
2102	04 7760	Kuopio	555	2004	505	1	01	011	01	01	2	1
2103	04 7760	Kuopio	555	2004	505	1	01	011	01	01	2	1
2104	04 7760	Kuopio	555	2004	505	1	01	011	01	01	2	1
2105	04 7760	Kuopio	555	2004	505	1	01	011	01	01	2	1
2106	04 7760	Kuopio	555	2004	505	1	01	011	01	01	2	1
2107	04 7760	Kuopio	555	2004	505	1	01	011	01	01	2	1
2108	04 7760	Kuopio	555	2004	505	1	01	011	01	01	2	1
2109	04 7760	Kuopio	555	2004	505	1	01	011	01	01	2	1
2110	04 7760	Kuopio	555	2004	505	1	01	011	01	01	2	1
2111	04 7760	Kuopio	555	2004	505	1	01	011	01	01	2	1
2112	04 7760	Kuopio	555	2004	505	1	01	011	01	01	2	1
2113	04 7760	Kuopio	555	2004	505	1	01	011	01	01	2	1
2114	04 7760	Kuopio	555	2004	505	1	01	011	01	01	2	1
2115	04 7760	Kuopio	555	2004	505	1	01	011	01	01	2	1
2116	04 7760	Kuopio	555	2004	505	1	01	011	01	01	2	1
2117	04 7760	Kuopio	555	2004	505	1	01	011	01	01	2	

2004	04 7760	Kanjo	525	2004	505	1	01	011	01	01	2	1
2004	04 9400	Kanto	526	2004	505	1	01	011	01	01	2	1
2004	04 9400	Kanjo	526	2004	505	1	01	011	01	01	2	1
2004	04 9400	Kanjo	526	2004	505	1	01	011	01	01	2	1
2004	04 9400	Kanjo	526	2004	505	1	01	011	01	01	2	1
2004	04 9400	Kanjo	526	2004	505	1	01	011	01	01	2	1
2004	04 9400	Kanjo	526	2004	505	1	01	011	01	01	2	1
2004	04 9400	Kanjo	526	2004	505	1	01	011	01	01	2	1
2004	04 9400	Kanjo	526	2004	505	1	01	011	01	01	2	1
2004	04 9400	Kanjo	526	2004	505	1	01	011	01	01	2	1
2004	04 9400	Kanjo	526	2004	505	1	01	011	01	01	2	1
2004	04 9400	Kanjo	526	2004	505	1	01	011	01	01	2	1
2004	04 9400	Kanjo	526	2004	505	1	01	011	01	01	2	1
2004	04 9400	Kanjo	526	2004	505	1	01	011	01	01	2	1
2004	04 9400	Kanjo	526	2004	505	1	01	011	01	01	2	1
2004	04 9400	Kanjo	526	2004	505	1	01	011	01	01	2	1
2004	04 9400	Kanjo	526	2004	505	1	01	011	01	01	2	1
2004	04 9400	Kanjo	526	2004	505	1	01	011	01	01	2	1
2004	04 9400	Kanjo	526	2004	505	1	01	011	01	01	2	1
2004	04 9400	Kanjo	526	2004	505	1	01	011	01	01	2	1
2004	04 9400	Kanjo	526	2004	505	1	01	011	01	01	2	1
2004	04 9400	Kanjo	526	2004	505	1	01	011	01	01	2	1
2004	04 9400	Kanjo	526	2004	505	1	01	011	01	01	2	1
2004	04 9400	Kanjo	526	2004	505	1	01	011	01	01	2	1
2004	04 9400	Kanjo	526	2004	505	1	01	011	01	01	2	1
2004	04 9400	Kanjo	526	2004	505	1	01	011	01	01	2	1
2004	04 9400	Kanjo	526	2004	505	1	01	011	01	01	2	1
2004	04 9400	Kanjo	526	2004	505	1	01	011	01	01	2	1
2004	04 9400	Kanjo	526	2004	505	1	01	011	01	01	2	1
2004	04 9400	Kanjo	526	2004	505	1	01	011	01	01	2	1
2004	04 9400	Kanjo	526	2004	505	1	01	011	01	01	2	1
2004	04 9400	Kanjo	526	2004	505	1	01	011	01	01	2	1
2004	04 9400	Kanjo	526	2004	505	1	01	011	01	01	2	1
2004	04 9400	Kanjo	526	2004	505	1	01	011	01	01	2	1
2004	04 9400	Kanjo	526	2004	505	1	01	011	01	01	2	1
2004	04 9400	Kanjo	526	2004	505	1	01	011	01	01	2	1
2004	04 9400	Kanjo	526	2004	505	1	01	011	01	01	2	1
2004	04 9400	Kanjo	526	2004	505	1	01	011	01	01	2	1
2004	04 9400	Kanjo	526	2004	505	1	01	011	01	01	2	1
2004	04 9400	Kanjo	526	2004	505	1	01	011	01	01	2	1
2004	04 9400	Kanjo	526	2004	505	1	01	011	01	01	2	1
2004	04 9400	Kanjo	526	2004	505	1	01	011	01	01	2	1
2004	04 9400	Kanjo	526	2004	505	1	01	011	01	01	2	1
2004	04 9400	Kanjo	526	2004	505	1	01	011	01	01	2	1
2004	04 9400	Kanjo	526	2004	505	1	01	011	01	01	2	1
2004	04 9400	Kanjo	526	2004	505	1	01	011	01	01	2	1
2004	04 9400	Kanjo	526	2004	505	1	01	011	01	01	2	1
2004	04 9400	Kanjo	526	2004	505	1	01	011	01	01	2	1
2004	04 9400	Kanjo	526	2004	505	1	01	011	01	01	2	1
2004	04 9400	Kanjo	526	2004	505	1	01	011	01	01	2	1
2004	04 9400	Kanjo	526	2004	505	1	01	011	01	01	2	1
2004	04 9400	Kanjo	526	2004	505	1	01	011	01	01	2	1
2004	04 9400	Kanjo	526	2004	505	1	01	011	01	01	2	1
2004	04 9400	Kanjo	526	2004	505	1	01	011	01	01	2	1
2004	04 9400	Kanjo	526	2004	505	1	01	011	01	01	2	1
2004	04 9400	Kanjo	526	2004	505	1	01	011	01	01	2	1
2004	04 9400	Kanjo	526	2004	505	1	01	011	01	01	2	1
2004	04 9400	Kanjo	526	2004	505	1	01	011	01	01	2	1
2004	04 9400	Kanjo	526	2004	505	1	01	011	01	01	2	1
2004	04 9400	Kanjo	526	2004	505	1	01	011	01	01	2	1
2004	04 9400	Kanjo	526	2004	505	1	01	011	01	01	2	1
2004	04 9400	Kanjo	526	2004	505	1	01	011	01	01	2	1
2004	04 9400	Kanjo	526	2004	505	1	01	011	01	01	2	1
2004	04 9400	Kanjo	526	2004	505	1	01	011	01	01	2	1
2004	04 9400	Kanjo	526	2004	505	1	01	011	01	01	2	1
2004	04 9400	Kanjo	526	2004	505	1	01	011	01	01	2	1
2004	04 9400	Kanjo	526	2004	505	1	01	011	01	01	2	1
2004	04 9400	Kanjo	526	2004	505	1	01	011	01	01	2	1
2004	04 9400	Kanjo	526	2004	505	1	01	011	01	01	2	1
2004	04 9400	Kanjo	526	2004	505	1	01	011	01	01	2	1
2004	04 9400	Kanjo	526	2004	505	1	01	011	01	01	2	1
2004	04 9400	Kanjo	526	2004	505	1	01	011	01	01	2	1
2004	04 9400	Kanjo	526	2004	505	1	01	011	01	01	2	1
2004	04 9400	Kanjo	526	2004	505	1	01	011	01	01	2	1
2004	04 9400	Kanjo	526	2004	505	1	01	011	01	01	2	1
2004	04 9400	Kanjo	526	2004	505	1	01	011	01	01	2	1
2004	04 9400	Kanjo	526	2004	505	1	01	011	01	01	2	1
2004	04 9400	Kanjo	526	2004	505	1	01	011	01	01	2	1
2004	04 9400	Kanjo	526	2004	505	1</						

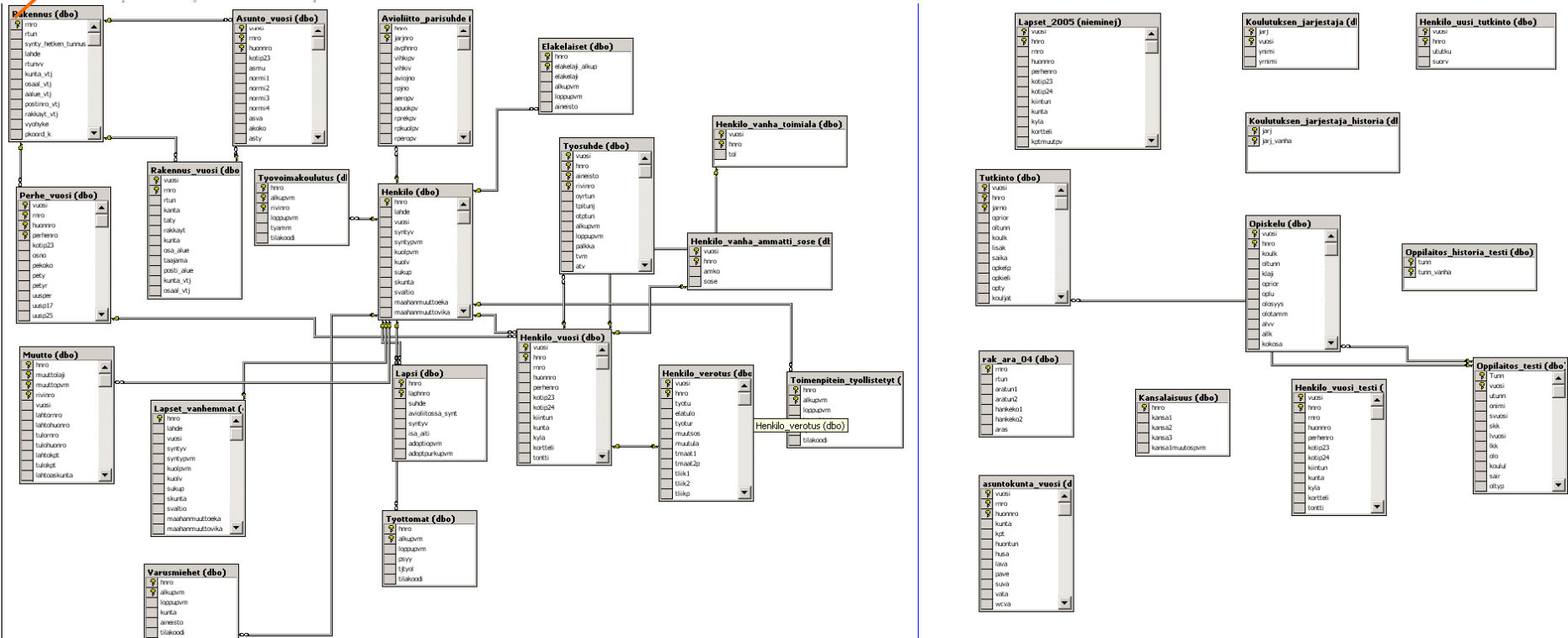
Spatiality of single unit data in the new environment

- Spatial information
only once
in the statistical production
database as well
in the data warehouse

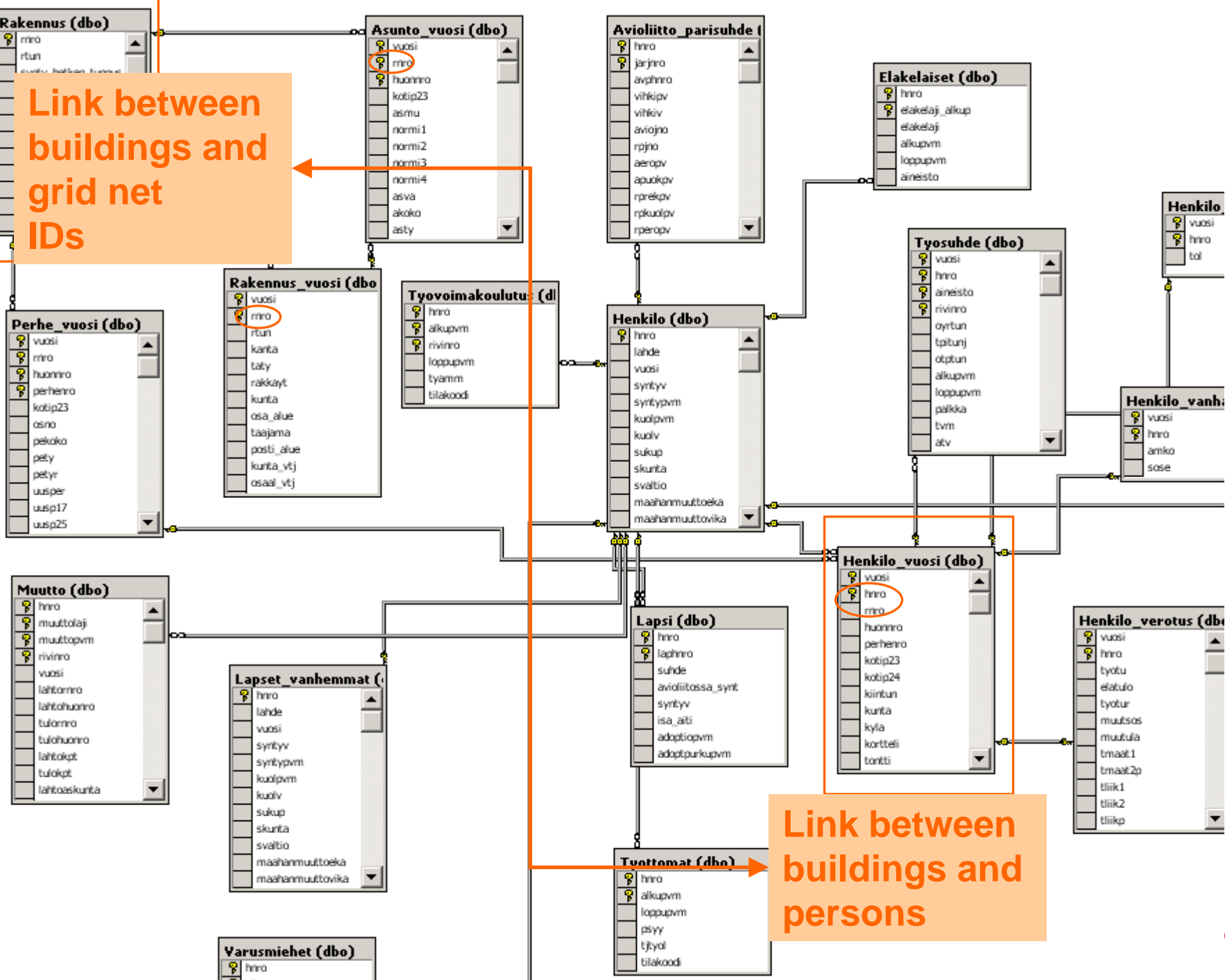


Building table - key to the location of buildings

- co-ordinates of buildings
- ID of the grid cell the building is located in

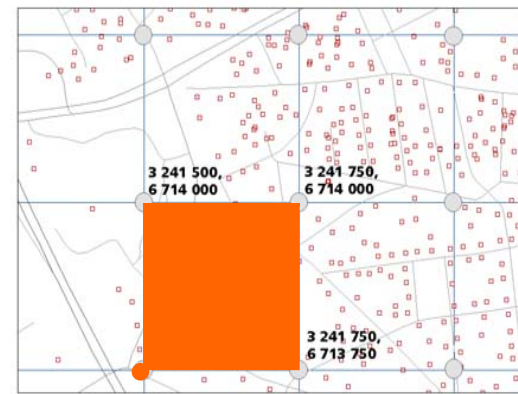


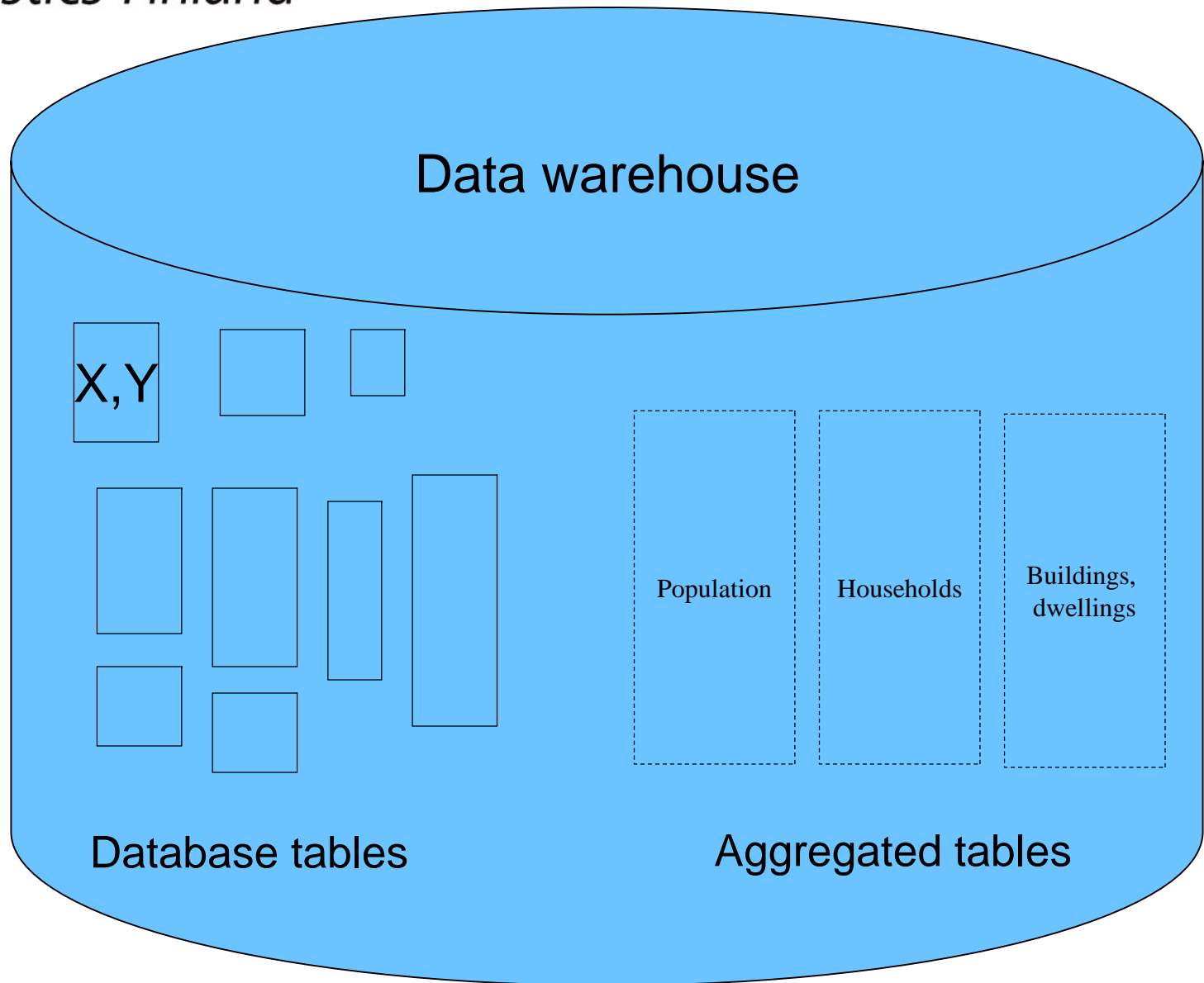
Link between
buildings and
grid net
IDs



The work flow

- 1 Building table** has information on which grid cell a particular building is located in (ID of grid cell)
- 2** Data selection by attribute data
- 3 Aggregating** of buildings with same ID information
- 4** Creating of ***aggregated tables by grids*** to the data warehouse (wide data content, sensible data included)
- 5** ArcSDE view is created for certain use (e.g. data content of the Grid Database product)
 - a** The view includes spatial join between the view and the grid net
 - b** Data security rules
- 6** Data **exporting**



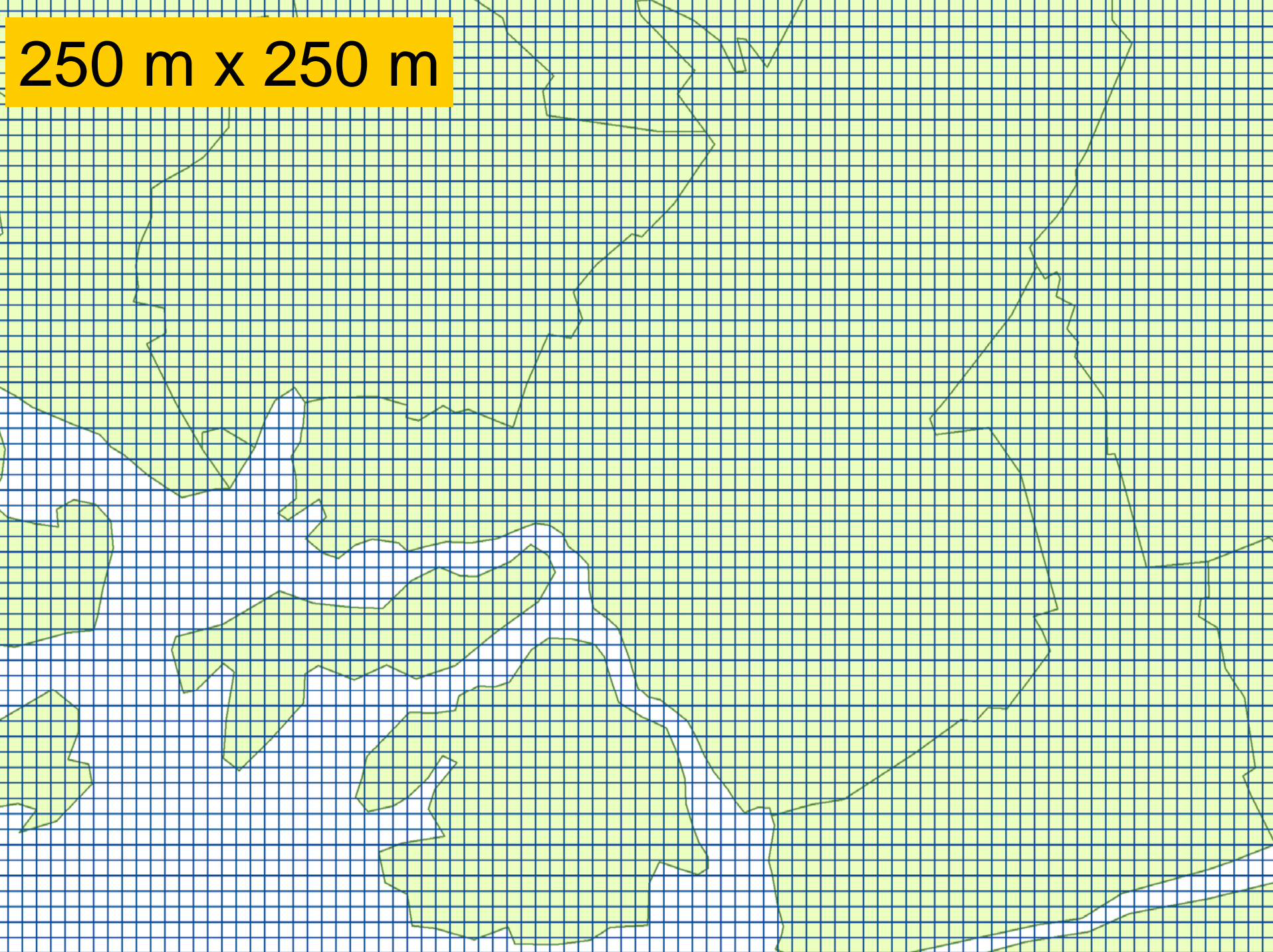


The grid net (250 m)

ID

OBJECTID *	IKOORD	PKOORD	NRO *	KUNTA *	KUNTANRO	shape *	shape.area	shape.len
1	3167500	6807750	2151335	684	684	Polygon	62500	1000
2	3167750	6807750	2151336	684	684	Polygon	62500	1000
3	3168000	6807750	2151337	684	684	Polygon	62500	1000
4	3168250	6807750	2151338	684	684	Polygon	62500	1000
5	3168500	6807750	2151339	684	684	Polygon	62500	1000
6	3168750	6807750	2151340	684	684	Polygon	62500	1000
7	3169000	6807750	2151341	684	684	Polygon	62500	1000
8	3169250	6807750	2151342	684	684	Polygon	62500	1000
9	3169500	6807750	2151343	684	684	Polygon	62500	1000
10	3169750	6807750	2151344	684	684	Polygon	62500	1000
11	3170000	6807750	2151345	684	684	Polygon	62500	1000
12	3170250	6807750	2151346	684	684	Polygon	62500	1000
13	3170500	6807750	2151347	684	684	Polygon	62500	1000
14	3170750	6807750	2151348	684	684	Polygon	62500	1000
15	3171000	6807750	2151349	684	684	Polygon	62500	1000
16	3171250	6807750	2151350	684	684	Polygon	62500	1000
17	3171500	6807750	2151351	684	684	Polygon	62500	1000
18	3171750	6807750	2151352	684	684	Polygon	62500	1000
19	3172000	6807750	2151353	684	684	Polygon	62500	1000
20	3172250	6807750	2151354	684	684	Polygon	62500	1000
21	3172500	6807750	2151355	684	684	Polygon	62500	1000
22	3172750	6807750	2151356	684	684	Polygon	62500	1000
23	3173000	6807750	2151357	684	684	Polygon	62500	1000
24	3173250	6807750	2151358	684	684	Polygon	62500	1000
25	3173500	6807750	2151359	684	684	Polygon	62500	1000
26	3173750	6807750	2151360	684	684	Polygon	62500	1000
27	3174000	6807750	2151361	684	684	Polygon	62500	1000
28	3174250	6807750	2151362	684	684	Polygon	62500	1000
29	3174500	6807750	2151363	684	684	Polygon	62500	1000
30	3174750	6807750	2151364	684	684	Polygon	62500	1000
...

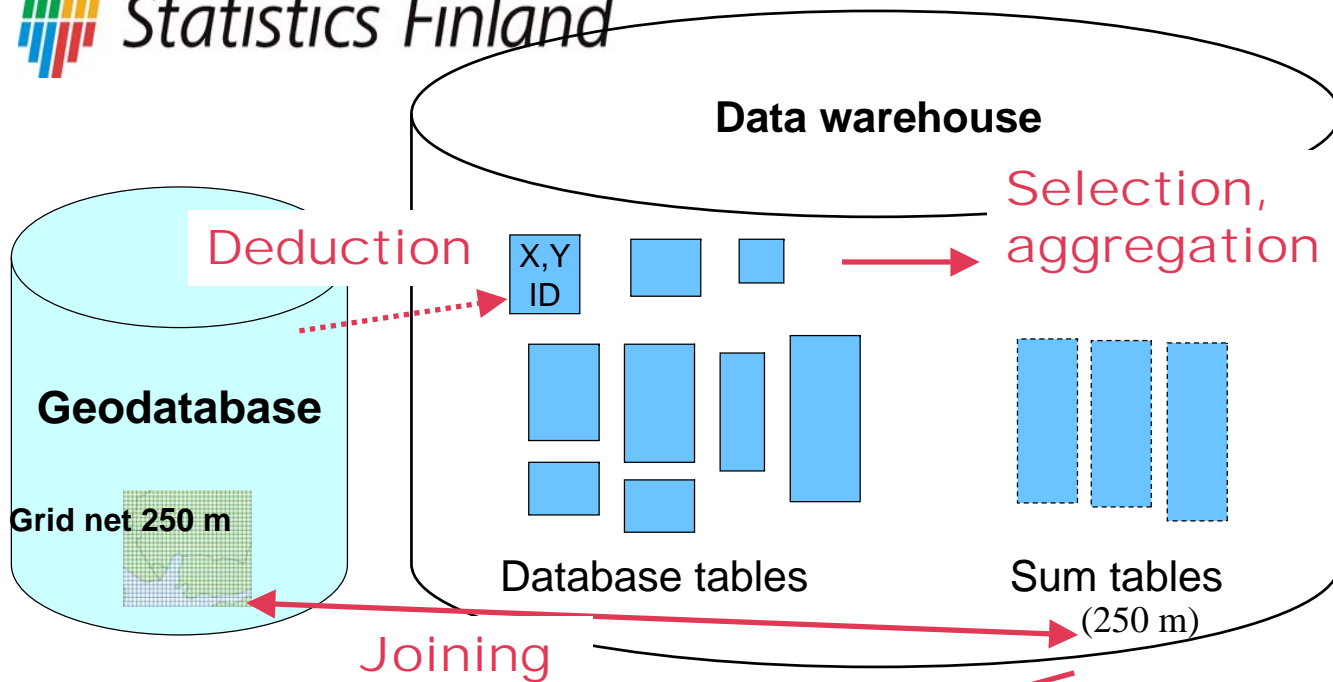
Projected co-ordinate system name: Finland_Zone_3
Geographic co-ordinate system name: GCS_KKJ



250 m x 250 m

Spatial database view

- Like an ordinary database view with spatial characters added
- Spatiality from *one* feature class
- A view may use *many* database tables or database views
- Data aggregating could also be done in this phase - very heavy operation



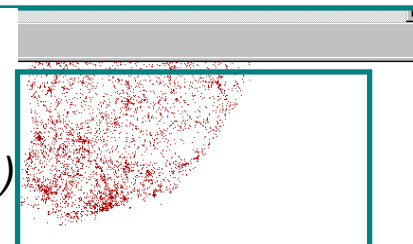
Creating a view

- selection
- data security

Spatial database view

Export

SHP (personal GDB, XML file...)



Data in table 'r1km_he_testi' in 'he_tuotantokanta_testi' on 'HE05K'

id_nro	he_vakiy	he_naiset	he_miehet	he_kika	he_vauvat	he_leikk_i	he_allek_i	he_alaas_i	he_teini_i	he_lapset	he_nuoret	he
788557	1	1	0	78	0	0	0	0	0	0	0	0
788558	20	10	10	28	0	4	4	5	0	9	0	3
788559	35	16	19	36	1	0	1	1	0	2	13	4
787882	17	9	8	39	0	0	0	1	2	3	2	0
787883	67	35	32	40	1	3	4	5	4	13	9	7
787884	23	12	11	39	0	3	3	1	3	7	2	0
787200	1	0	1	45	0	0	0	0	0	0	0	0
787204	2	1	1	70	0	0	0	0	0	0	0	0
787207	2	1	1	61	0	0	0	0	0	0	0	0
787208	11	5	6	41	1	1	2	1	0	3	1	0
786527	1	0	1	68	0	0	0	0	0	0	0	0
786531	2	1	1	69	0	0	0	0	0	0	0	0
786532	7	3	4	39	0	0	0	0	0	0	3	1
786540	0	0	0	0	0	0	0	0	0	0	0	0
785858	0	0	0	0	0	0	0	0	0	0	0	0
785178	0	0	0	0	0	0	0	0	0	0	0	0
785179	0	0	0	0	0	0	0	0	0	0	0	0
785182	0	0	0	0	0	0	0	0	0	0	0	0
784505	4	2	2	39	0	1	1	0	0	1	0	0
783832	0	0	0	0	0	0	0	0	0	0	0	0
783849	0	0	0	0	0	0	0	0	0	0	0	0
783157	1	0	1	75	0	0	0	0	0	0	0	0
783158	4	2	2	48	0	0	0	0	1	1	0	0
783159	5	1	4	48	0	0	0	0	0	0	1	0
782481	1	0	1	56	0	0	0	0	0	0	0	0
782503	1	0	1	57	0	0	0	0	0	0	0	0
781822	0	0	0	0	0	0	0	0	0	0	0	0
781828	1	1	0	73	0	0	0	0	0	0	0	0
781133	0	0	0	0	0	0	0	0	0	0	0	0
781134	0	0	0	0	0	0	0	0	0	0	0	0
780458	1	0	1	64	0	0	0	0	0	0	0	0
780459	4	1	3	50	0	0	0	0	0	0	1	0

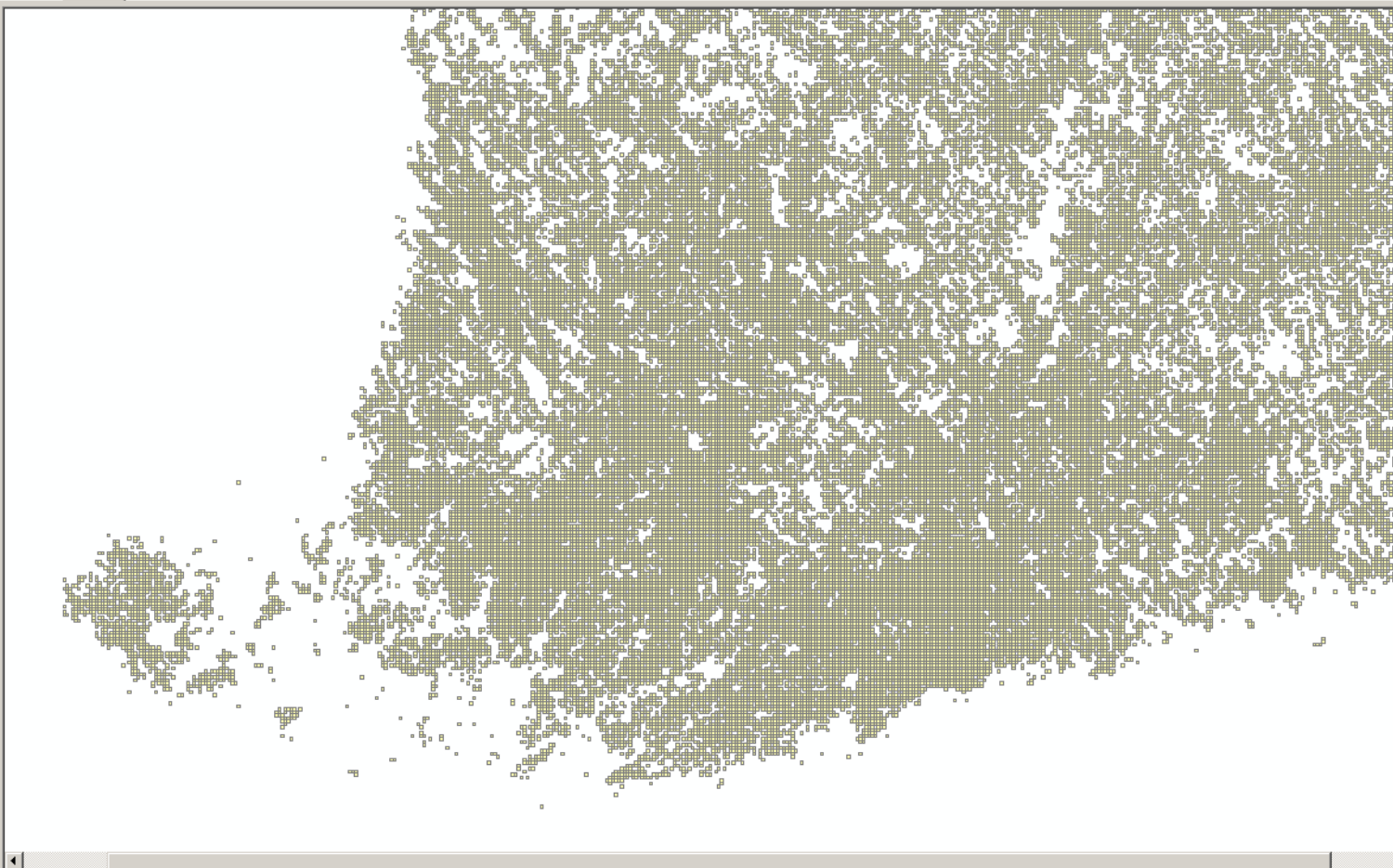


Location: Database Connections\Gistesti.sde\GISTESTI.MAP.V_RUUTU1KM_HE_TESTI

Worksheet: FGDC ESRI

- Gistesti.MAP.netti_osoite_turku
- Gistesti.map.OSA_ALUE_NIMET_2007
- Gistesti.MAP.Osoite
- Gistesti.MAP.osoite_hesa
- Gistesti.map.osoite_virhetaulu
- Gistesti.MAP.osoitevirhe_sijainti
- gistesti.MAP.posti_testi
- Gistesti.map.POSTINRO_DATA
- gistesti.MAP.Postinumeroalue_2007_MAK
- Gistesti.MAP.Postinumeroalueet
- gistesti.MAP.Postinumeroalueet_metatesti
- gistesti.MAP.rakennuksen_sijainti_testi_5
- gistesti.MAP.rakennukset2005_taaajamissa_mle
- Gistesti.map.rakennus_elyht
- Gistesti.MAP.Rakennuskanta_sijainti
- Gistesti.MAP.ruudut1km
- gistesti.MAP.Ruutukutk2005_250m
- Gistesti.map.Ruututietokanta2005_1km
- GISTESTI.MAP.RUUTUTIETOKANTA2005_1KM_UU
- Gistesti.map.Ruututietokanta2005_250m
- gistesti.MAP.Ruututietokanta2006_1km
- Gistesti.map.RUUTUTIETOKANTA2006_1KM_KANT
- gistesti.MAP.Ruututietokanta2006_250m
- Gistesti.map.RUUTUTIETOKANTA2006_250M_KAN
- gistesti.MAP.Ruutuvaki2006_1km
- gistesti.MAP.Ruutuvaki2006_250m
- Gistesti.map.SEUTUKUNTA_NIMET
- Gistesti.map.SUURALUE_NIMET
- Gistesti.map.SYRJDESILIKUNNITC5
- Gistesti.map.SYRJLUOKITKUNNIT05
- Gistesti.map.T053
- Gistesti.MAP.Taaajama
- Gistesti.map.TAAJAMA_NIMET
- Gistesti.MAP.Taaajamat2005
- GISTESTI.MAP.TJ053
- Gistesti.MAP.TJHOLEB
- GISTESTI.MAP.TJHOLEX
- gistesti.MAP.Tjosat2005
- Gistesti.map.TR053V0
- Gistesti.map.Tulos
- Gistesti.map.Tulos_18_3_2007
- Gistesti.map.tulos_2003
- Gistesti.map.V05K07KTON
- GISTESTI.MAP.V_RUUTU1KM_AIKASARJA2_TESTI
- GISTESTI.MAP.V_RUUTU1KM_AIKASARJA_TESTI
- GISTESTI.MAP.V_RUUTU1KM_HE_TESTI
- GISTESTI.MAP.V_RUUTU1KM_HFRA_TFSTI

Contents Preview Metadata



Preview: Geography

ArcGIS / ArcCatalog
map view

ArcCatalog - ArcView - Database Connections\Gistesti.sde\GISTESTI.MAP.V_RUUTU1KM_HE_TESTI

File Edit View Go Tools Window Help

Location: Database Connections\Gistesti.sde\GISTESTI.MAP.V_RUUTU1KM_HE_TESTI

Stylesheet: FGDC ESRI

Contents Preview Metadata

Shape *	nro	kunta	he vakiy	he kika	he vauvat	he lapset	he nuoret	he vakiint	Shape.area	Shape.len
Polygon	51236	766	4	62	0	0	0	0	1000000	4000
Polygon	51283	279	0	0	0	0	0	0	1000000	4000
Polygon	51284	279	5	60	0	0	0	0	1000000	4000
Polygon	51285	279	27	42	0	6	2	1	1000000	4000
Polygon	51286	279	217	47	3	34	24	26	1000000	4000
Polygon	51300	533	9	39	2	2	0	0	1000000	4000
Polygon	51301	533	6	29	0	2	0	1	1000000	4000
Polygon	51302	533	11	51	0	0	3	0	1000000	4000
Polygon	51303	533	3	59	0	0	0	0	1000000	4000
Polygon	51316	533	1	55	0	0	0	0	1000000	4000
Polygon	51317	533	4	27	0	2	0	1	1000000	4000
Polygon	51350	243	15	48	1	1	2	0	1000000	4000
Polygon	51351	243	11	51	0	1	0	3	1000000	4000
Polygon	51353	243	11	55	1	2	0	1	1000000	4000
Polygon	51366	586	2	73	0	0	0	0	1000000	4000
Polygon	51367	586	0	0	0	0	0	0	1000000	4000
Polygon	51368	586	4	68	0	0	0	0	1000000	4000
Polygon	51370	586	3	42	0	0	2	0	1000000	4000
Polygon	51384	259	4	57	0	0	0	0	1000000	4000
Polygon	51386	259	1	74	0	0	0	0	1000000	4000
Polygon	51400	259	2	65	0	0	0	0	1000000	4000
Polygon	51403	223	4	59	0	0	0	0	1000000	4000
Polygon	51416	444	8	54	0	1	0	0	1000000	4000
Polygon	51417	444	3	39	0	0	0	0	1000000	4000
Polygon	51433	755	6	18	1	3	0	0	1000000	4000
Polygon	51435	755	2	58	0	0	0	0	1000000	4000
Polygon	51436	755	6	32	0	2	0	3	1000000	4000
Polygon	51450	257	37	41	1	8	3	6	1000000	4000
Polygon	51451	049	65	44	2	10	5	7	1000000	4000
Polygon	51452	049	1	27	0	0	0	0	1000000	4000
Polygon	51453	049	17	43	1	4	1	4	1000000	4000
Polygon	51467	092	1256	41	40	212	116	144	1000000	4000
Polygon	51468	091	555	40	26	112	46	67	1000000	4000
Polygon	51469	092	3905	34	170	924	480	672	1000000	4000
Polygon	51470	091	1890	37	76	424	129	345	1000000	4000
Polygon	51483	092	54	48	0	6	4	3	1000000	4000
Polygon	51484	092	0	0	0	0	0	0	1000000	4000
Polygon	51485	092	38	45	1	8	1	5	1000000	4000
Polygon	51486	753	44	36	1	15	0	13	1000000	4000
Polygon	51487	753	15	38	0	4	0	3	1000000	4000
Polygon	51500	753	53	33	5	19	2	15	1000000	4000
Polygon	51501	753	35	27	2	16	0	7	1000000	4000
Polygon	51502	753	10	32	0	4	0	4	1000000	4000
Polygon	51503	753	9	44	0	2	0	2	1000000	4000
Polygon	51517	638	1	31	0	0	0	0	1000000	4000
Polygon	51518	638	0	0	0	0	0	0	1000000	4000
Polygon	51520	638	33	35	1	10	1	6	1000000	4000
Polygon	50522	478	330	41	6	67	22	33	1000000	4000
Polygon	50535	417	1	73	0	0	0	0	1000000	4000

Record: 1 Show: All Selected Records (of *2000) Options

Preview: Table

ArcGIS / ArcCatalog
table view

2) What are the advantages of the new way

- Quality effects on
 - spatiality of single entity data (as basic data)
 - spatiality over time
- Number of specialists reduced, from 5-7 to 2-3 persons involved
- Number of work phases diminished
- Updating process easier to handle
- Production of grid products and commissions is quicker



3) What are the next steps in the development work

- Test phase ongoing
- Metadata production: ArcCatalog, XML database, SQL database
- Further development of the updating process
- Creation of aggregated tables by grids from time series data to the data warehouse
- Distribution in XML/GML format
- Later - user interfaces for grid production