

Presentation at the Nordic Forum for Geostatistics 2007
Helsinki, Finland.
Thursday 20 September

Johnny Sehlin and Kjell Ylivainio, Statistics Sweden

*D
A
T
A
from
the
M
A
P*

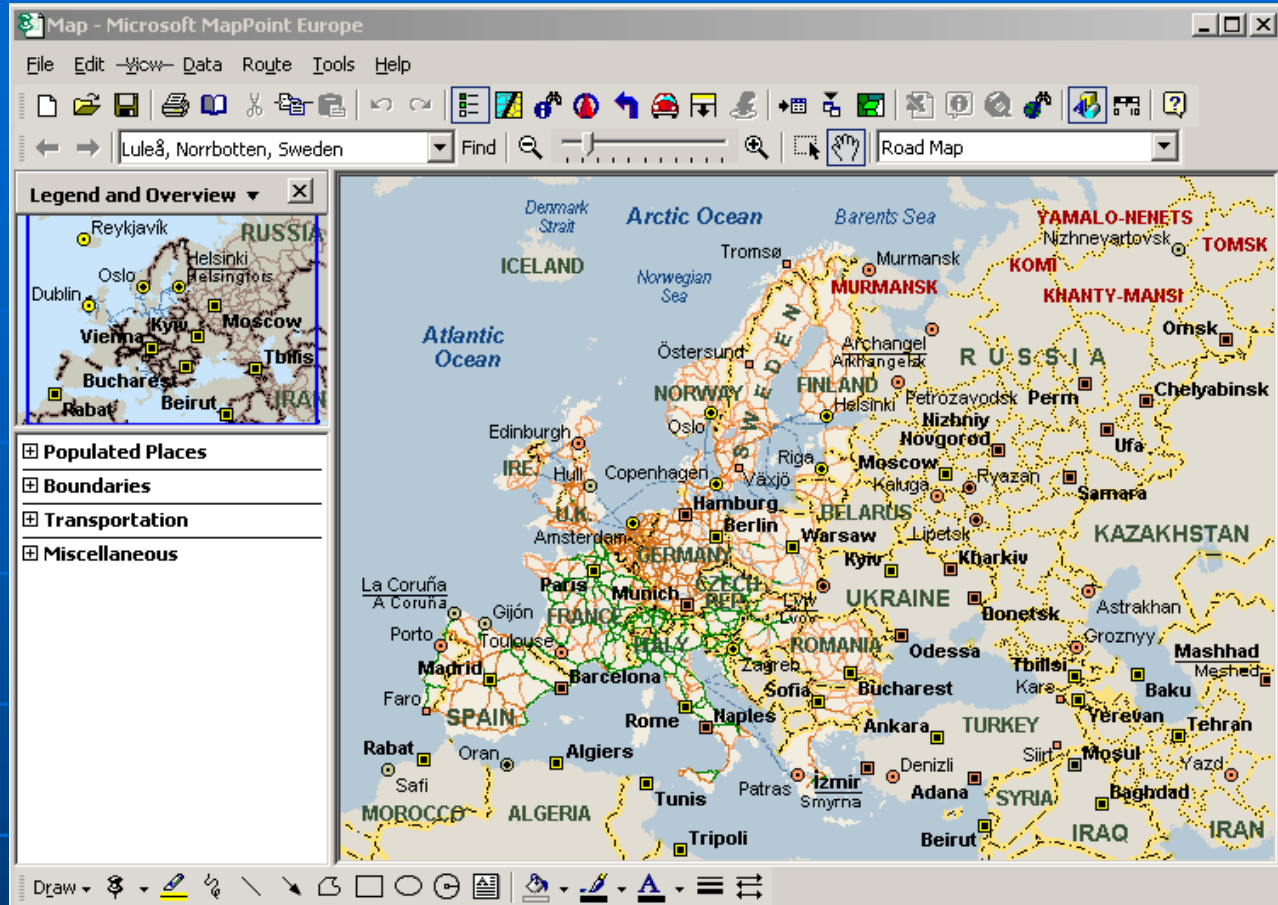
The problem

GIS infrastructure, software and maps,
is too expensive to most customers
interested in small area statistics

The solution

Find and use cheap software's and maps.
At Statistics Sweden we found MapPoint

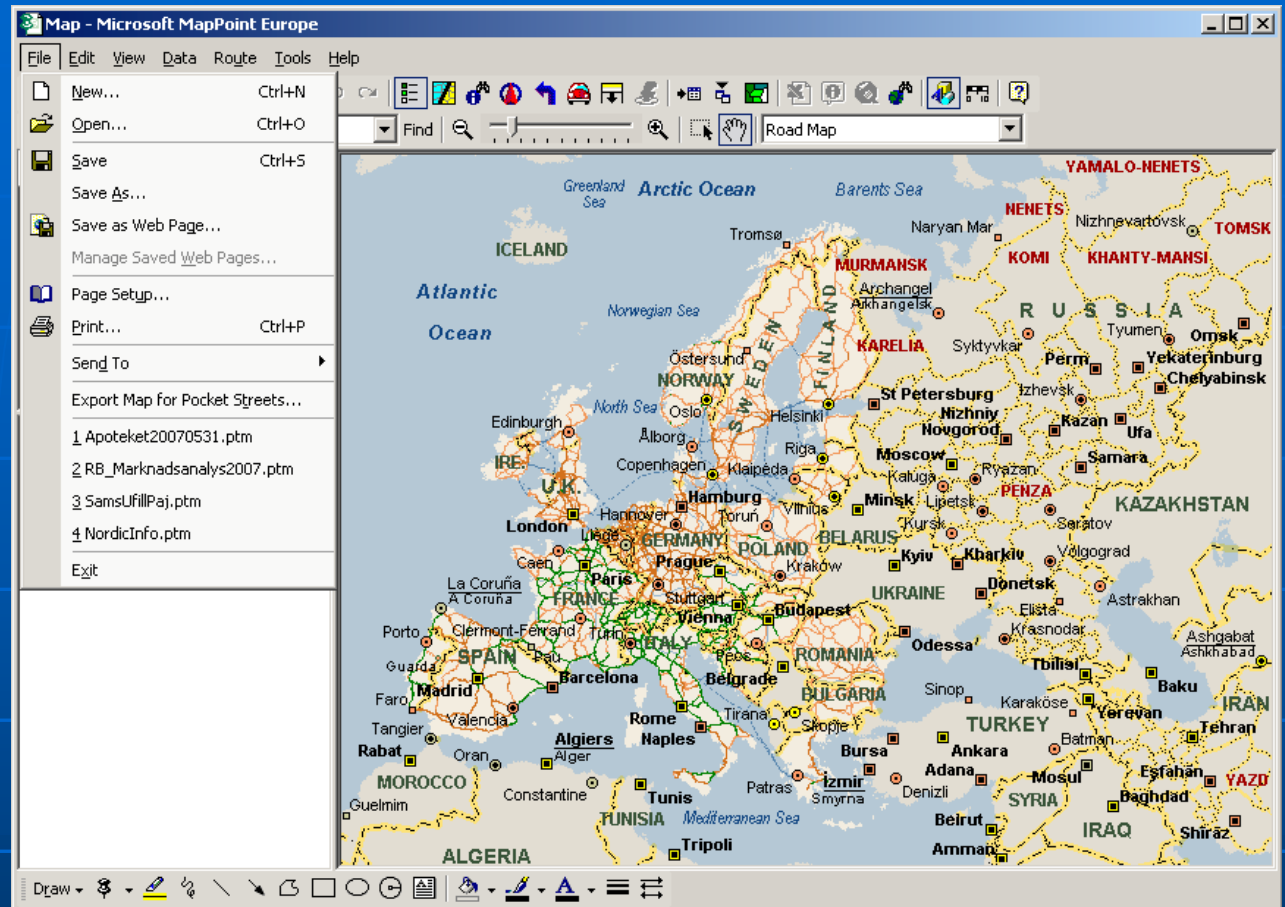
D A T A from the M A P



This is MapPoint

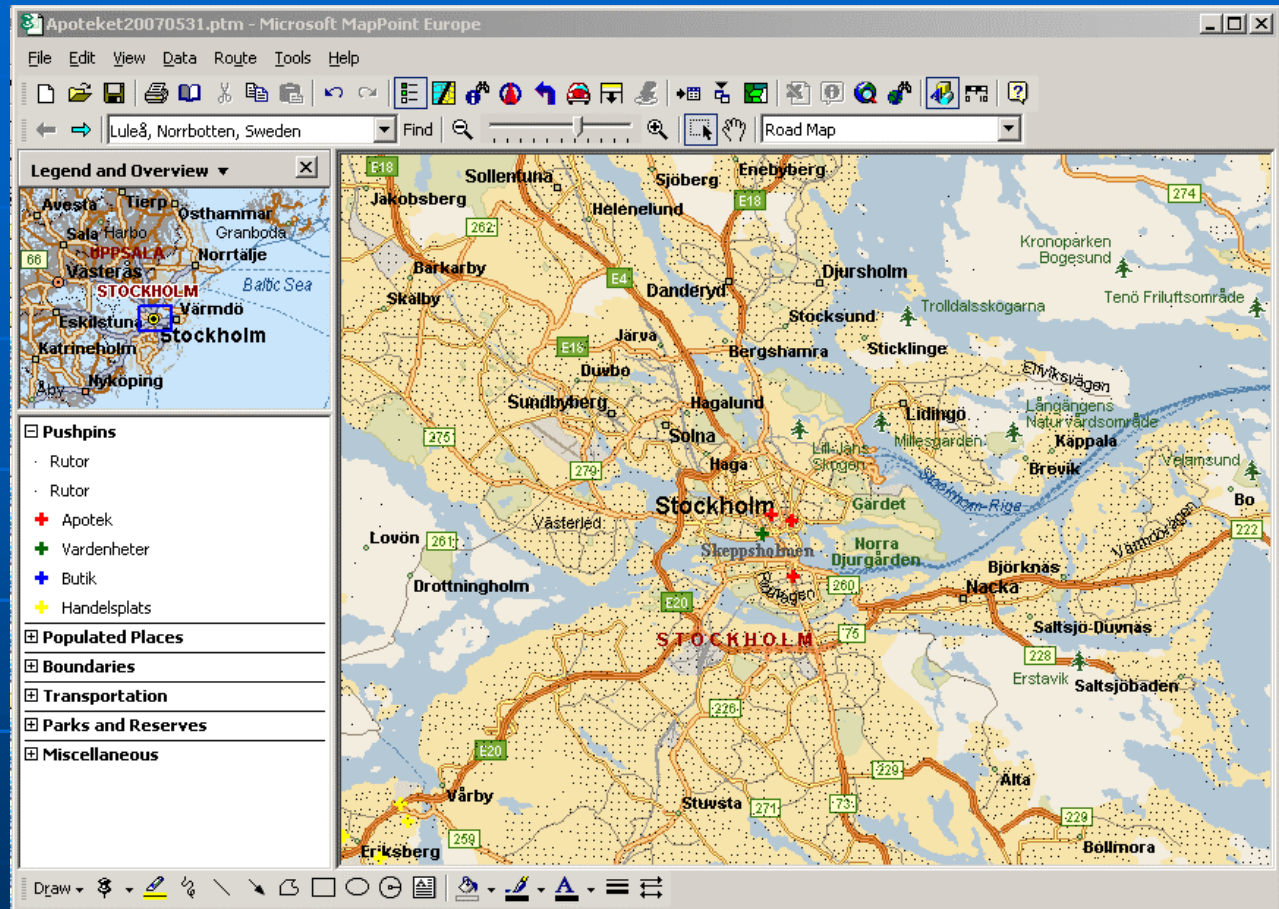
- Maps down to street level
- MS Office compatibility
- Programmable in Visual basic
- Price 300 Euro

D A T A from the M A P



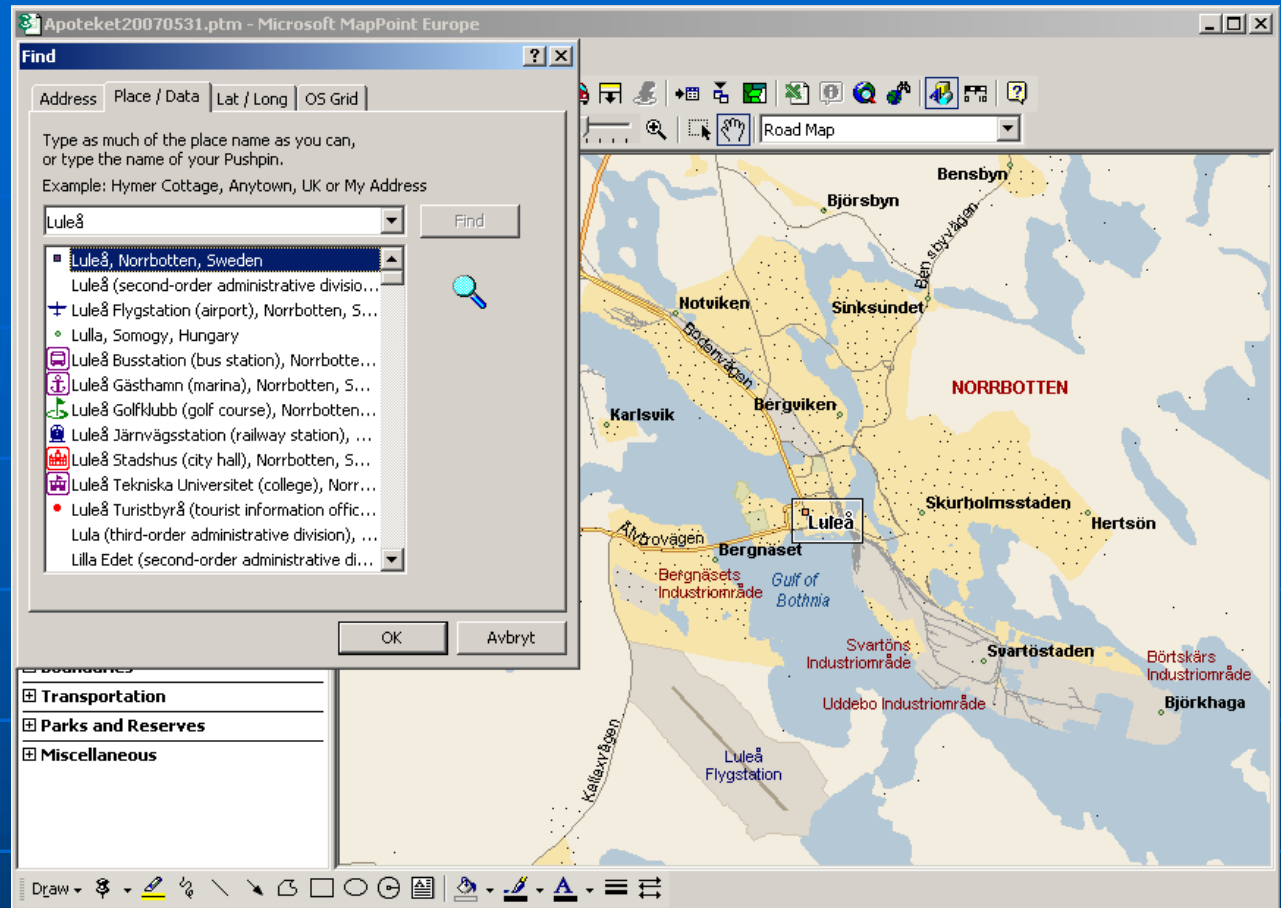
MapPoint uses Workspaces (.PTM-files) to open user defined views.
In this slide show 1. *Apoteket20070531.ptm*

D A T A from the M A P



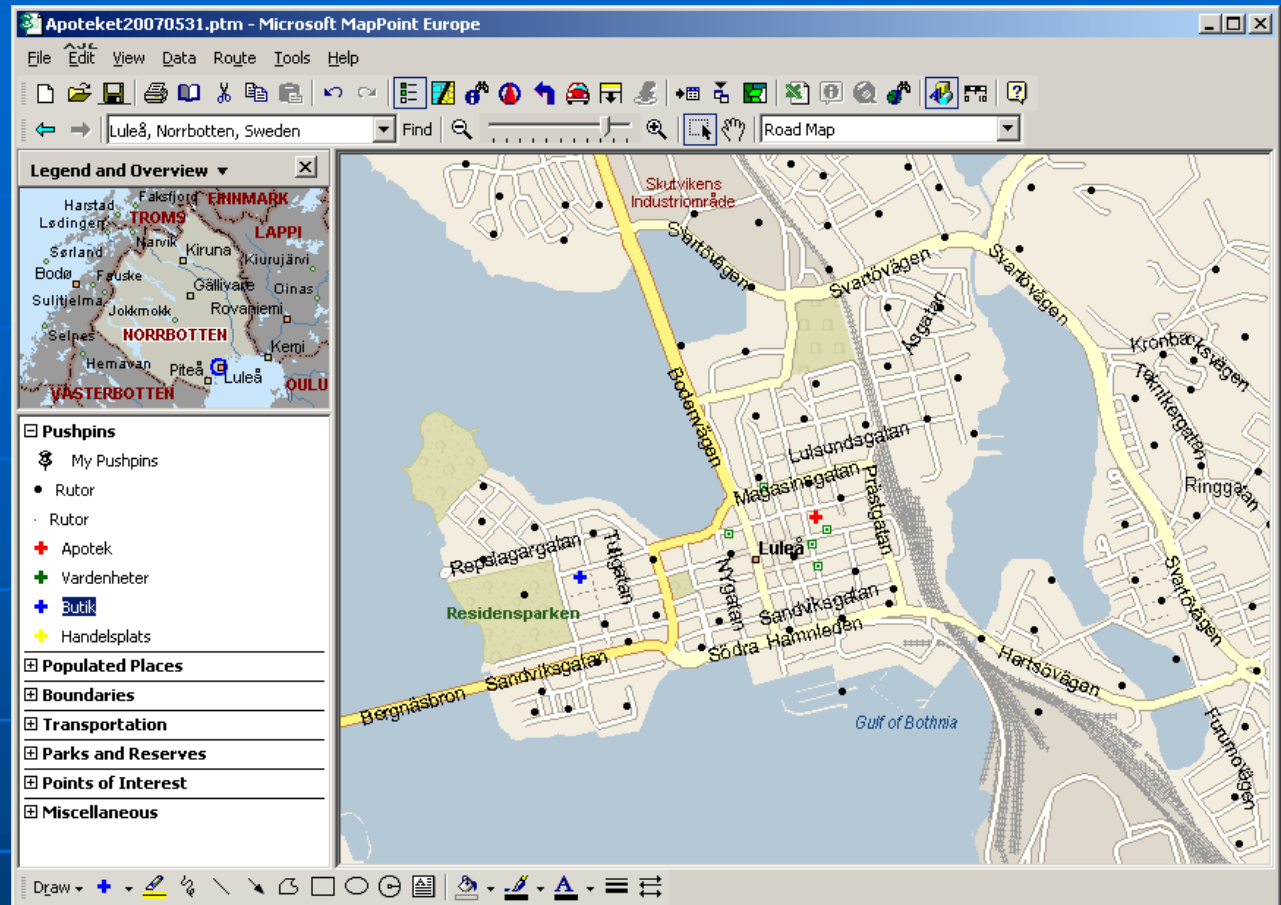
The .PTM-file opens the map zoomed in at Stockholm and opens a grid map with population centroids for 250x250 m (urban) and 1x1 km (rural) grids

DATA from the MAP



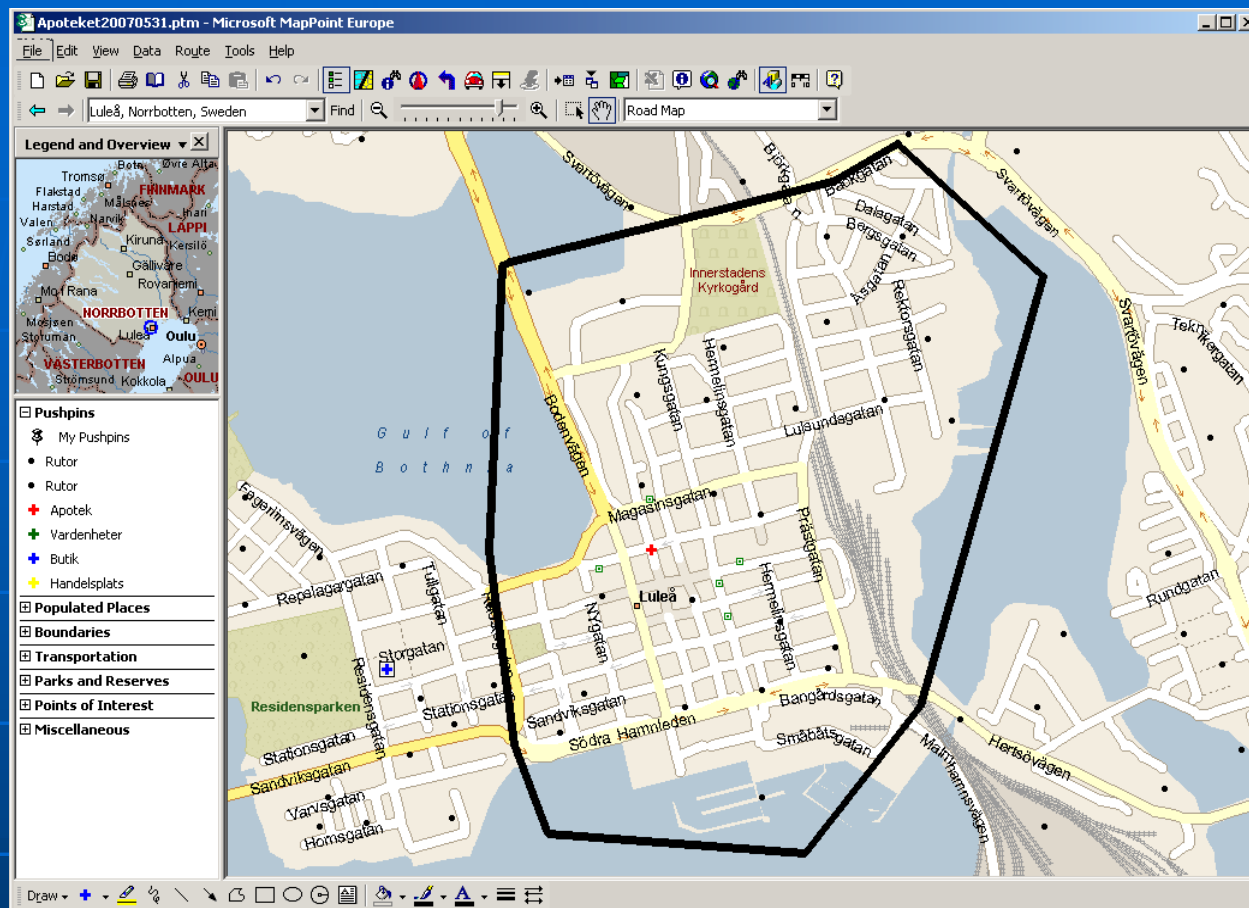
By using the Find option in MapPoint it is easy to find the geographical area of interest.
The city of Luleå up north in Sweden for instance

DATA from the MAP



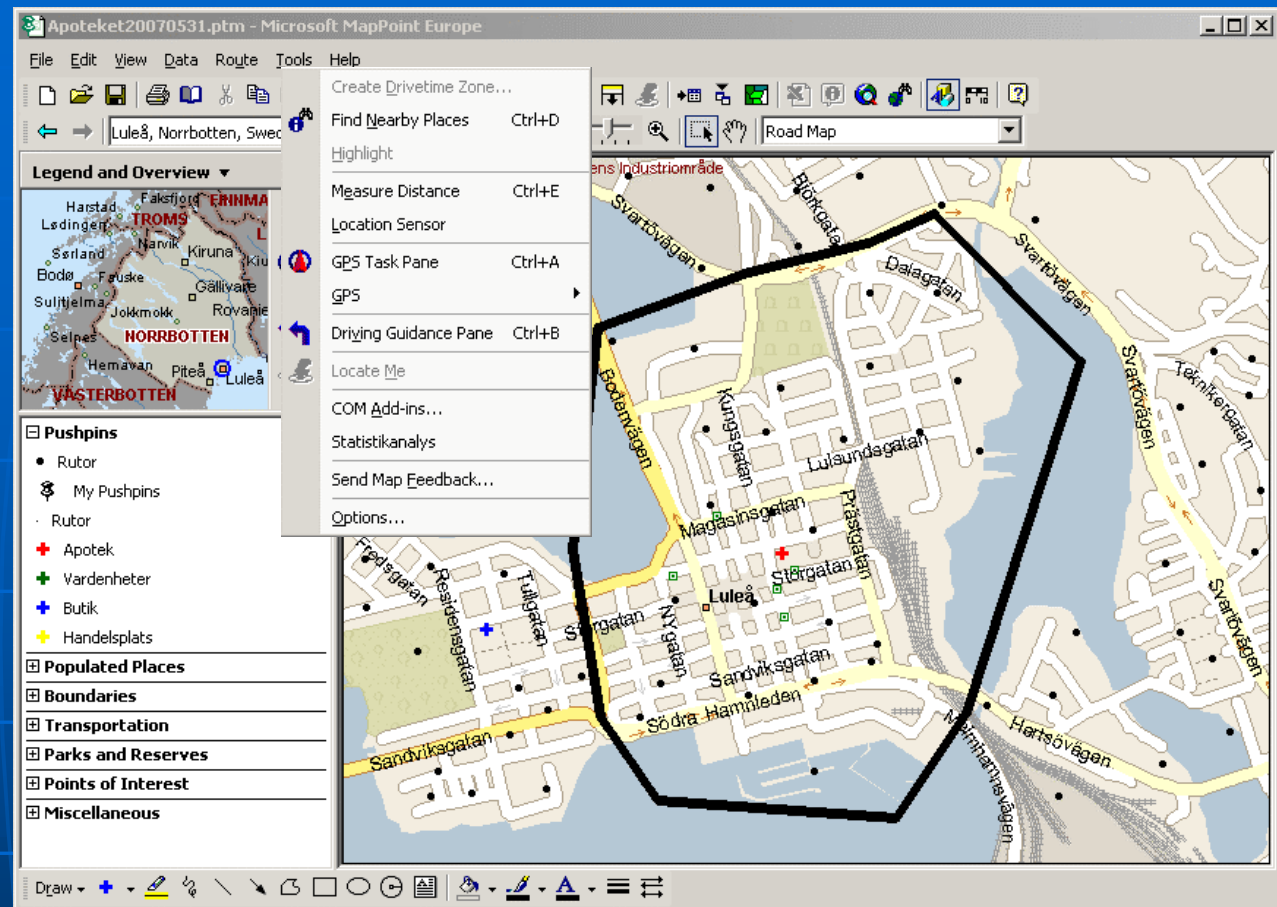
In this case we are interested in the centre of Luleå and zoom in to see the street level.

D A T A from the M A P



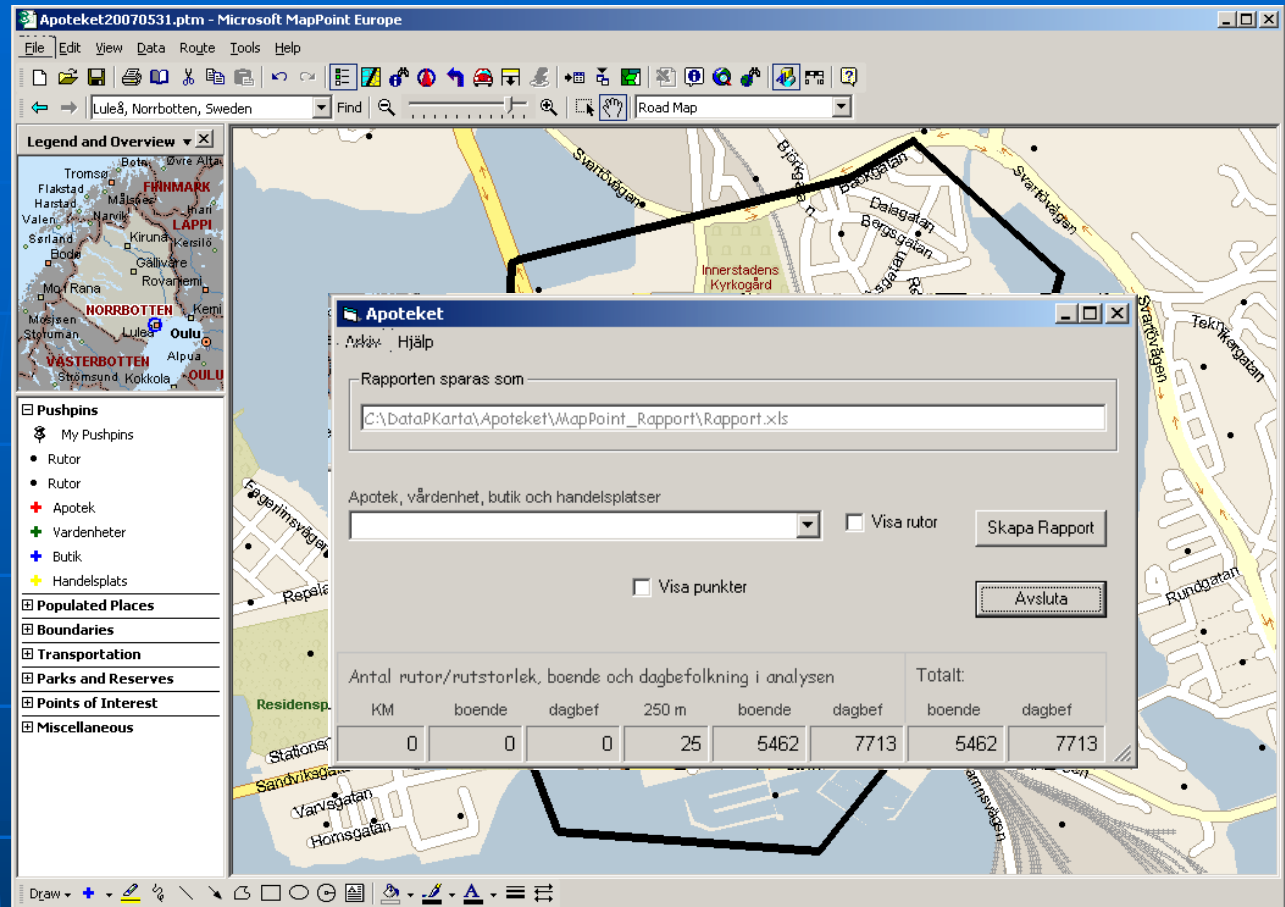
By using the drawing tools we delimit the area e.g. using the street information

D A T A from the M A P



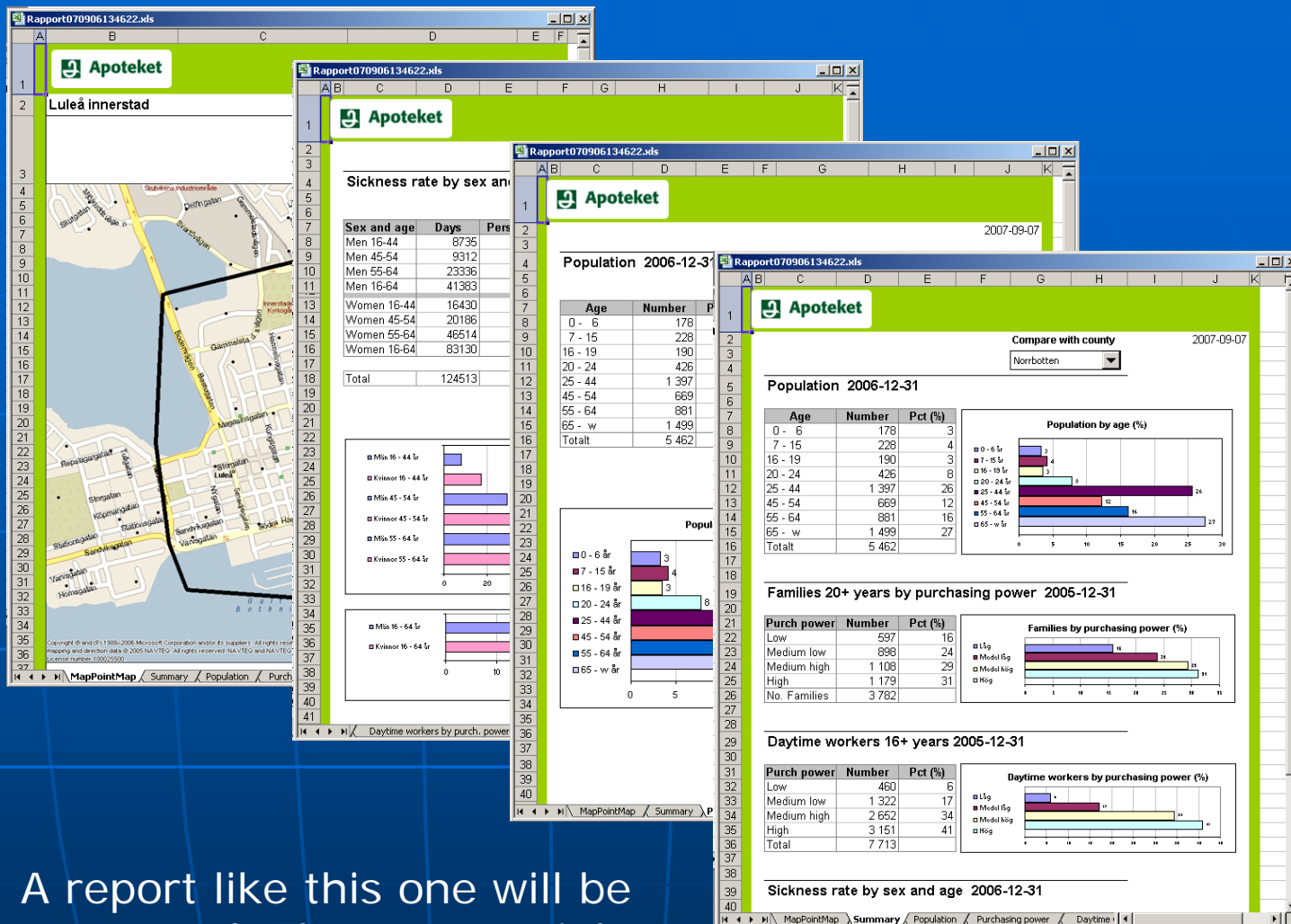
By starting the application *Statistikanalys* from the *Tools* menu MapPoint performs a point in polygon selection

D A T A from the M A P



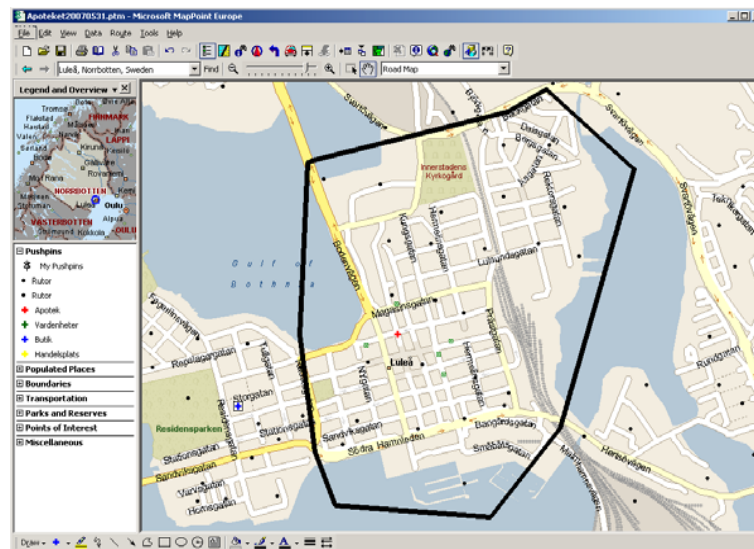
This form is shown giving some information about the selected area. By pressing the "Skapa rapport" Button a report is generated.

D A T A from the M A P

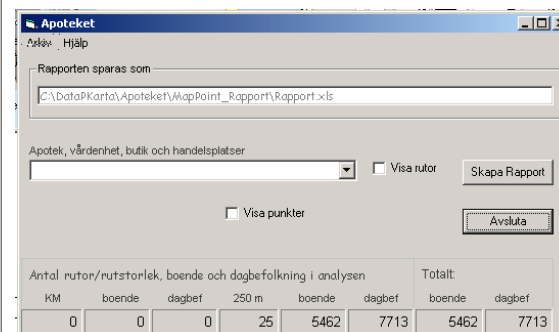


A report like this one will be generated. The report might consist of the map, tables and diagrams and can be altered by the user

In short: MapPoint application

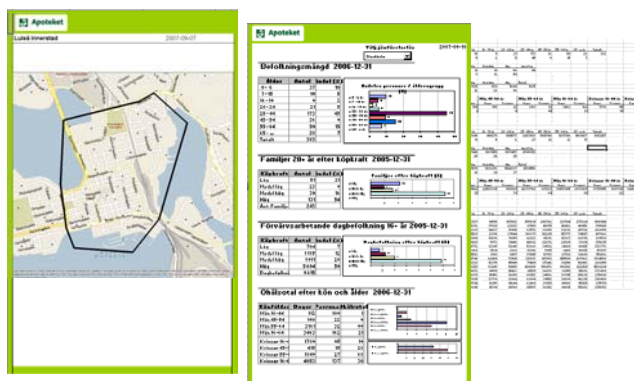


Draw an area on the map,
choose "Statistikanalys" in
the Tools menu and select
the "Skapa rapport" Add-in



Selected grids are
transferred to SQL Server
via a VB macro in Excel

Excel report



SQL Server (Database)

The Database consists of
statistics in tables and stored
procedures run from Visual Basic
macros in the Excelreport.

The result is transferred to the
report and is presented as a map,
in tables and in diagrams.