

Gridded population data by Insee

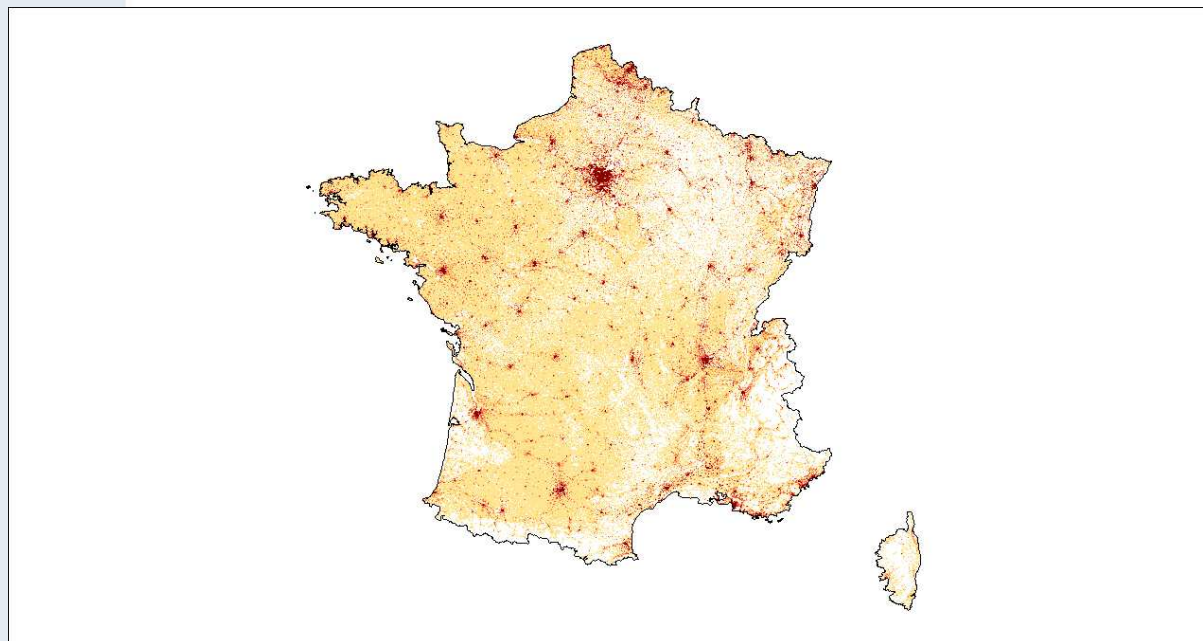
Was it worth the effort?

Jean-Luc LIPATZ
INSEE
October 2011



The state of the art

<http://www.efgs.info/data/france/grided-data-from-the-census>

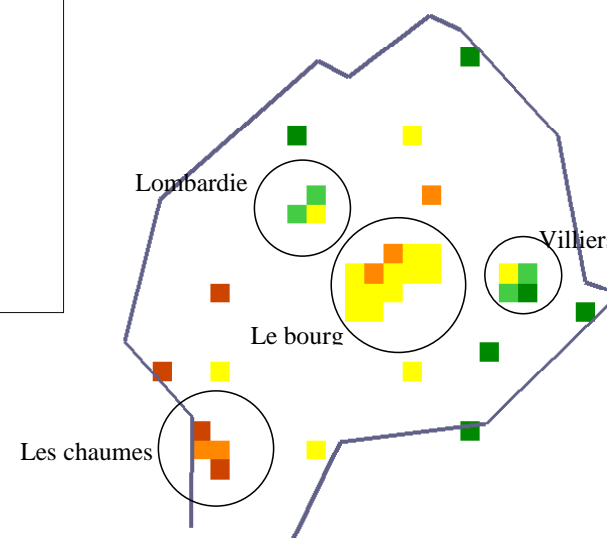


No more disaggregation
Smaller grid cells
More variables

...for any municipality of France

...even for the smallest ones

Page 2

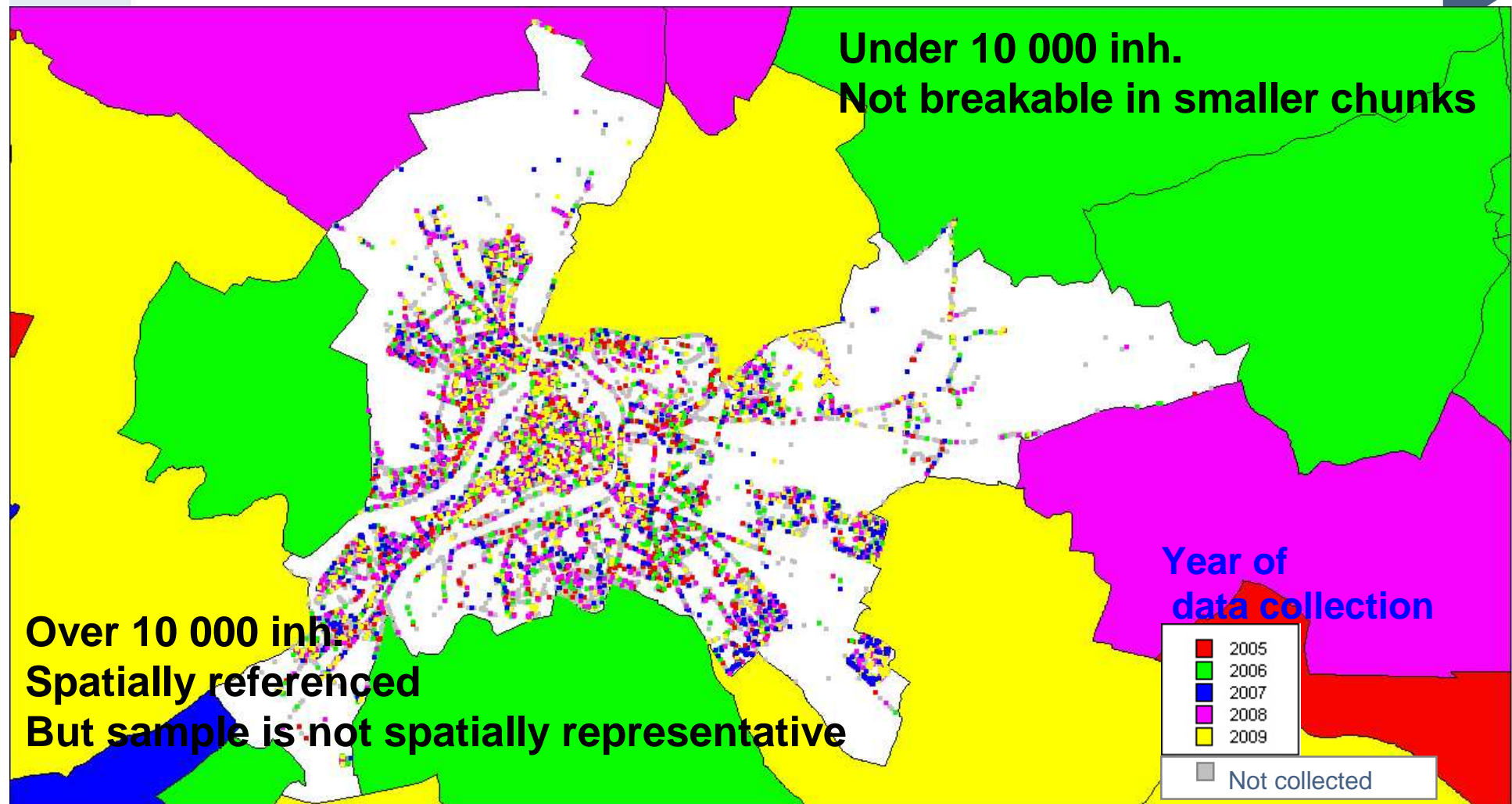


a - Surreprésentation (tact='12') 0.00 << >> 2.25

Census unemployment in 2009
In Curzay sur Vonne (465 inhabitants)

That was impossible mission

spatial units at their maximum resolution





The milestones

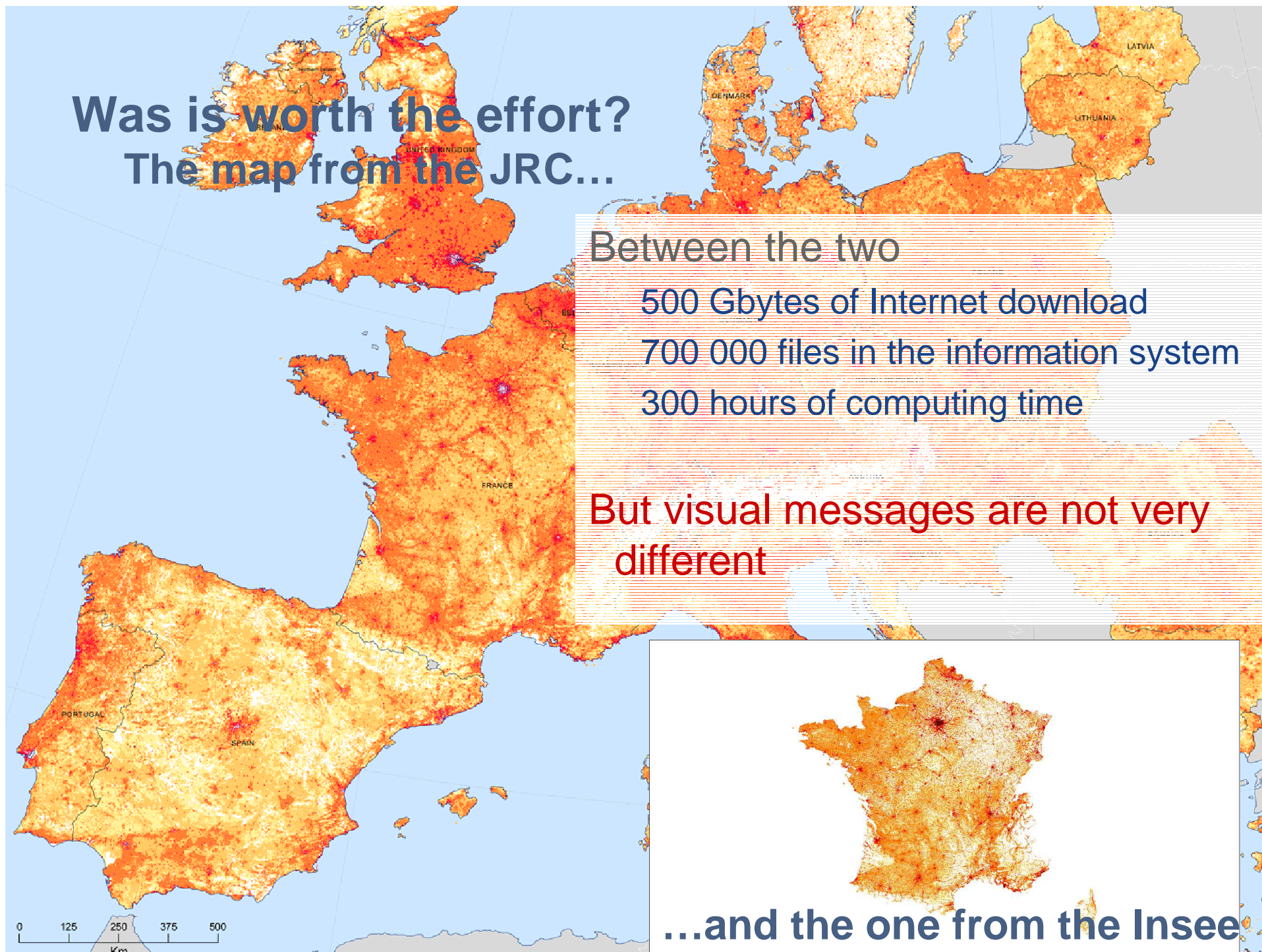
- › Coping with large municipalities :
EFGS Den Hague 2009
- › Coping with small municipalities
part1 (administrative registers): EFGS Tallinn 2010
- › Coping with small municipalities
part2 (census) : GISCO Luxemburg 2011

**Was it worth the effort?
The map from the JRC...**

Between the two
500 Gbytes of Internet download
700 000 files in the information system
300 hours of computing time

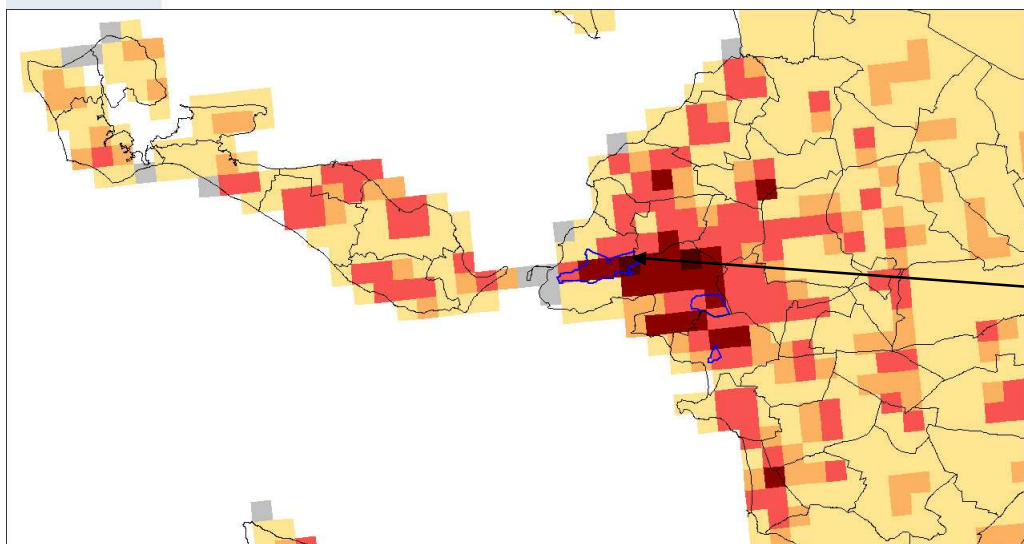
But visual messages are not very
different

...and the one from the Insee



Zooming : similar pictures...

JRC 2006 estimation

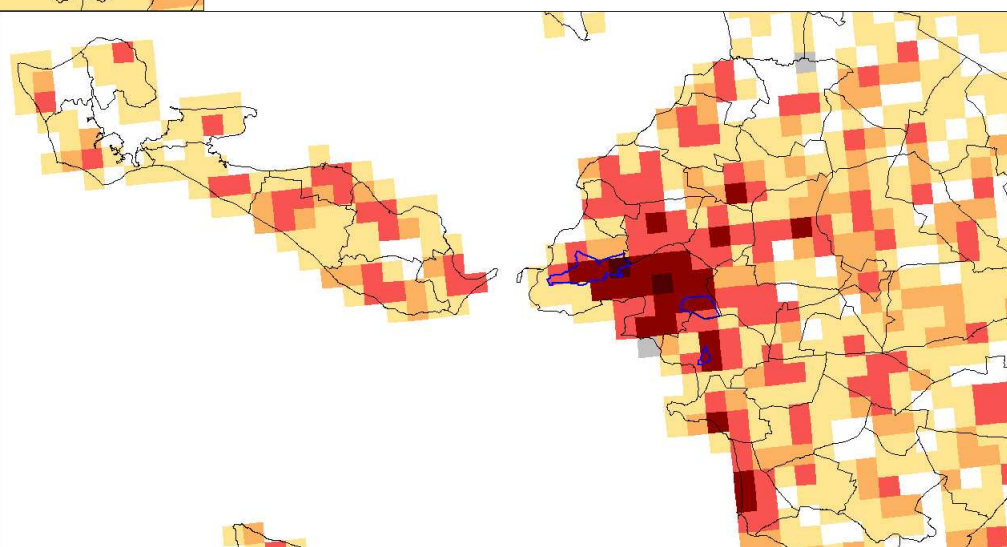
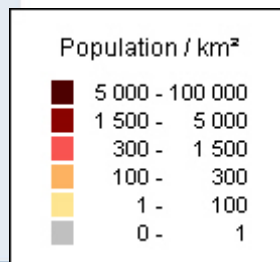


...but weak figures

5 400 inh. estimated

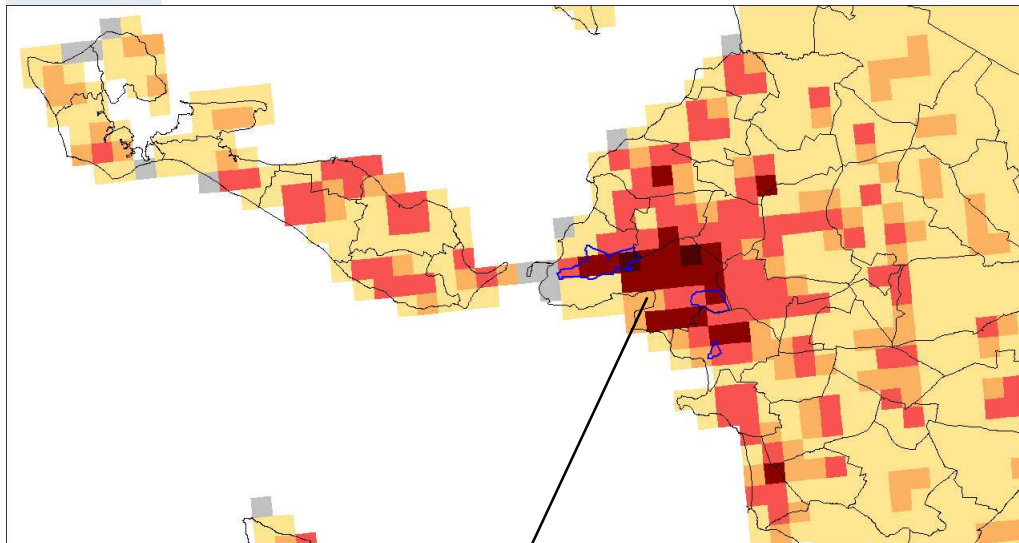
9 800 inh. counted

Census 2007



Using the data : similar results...

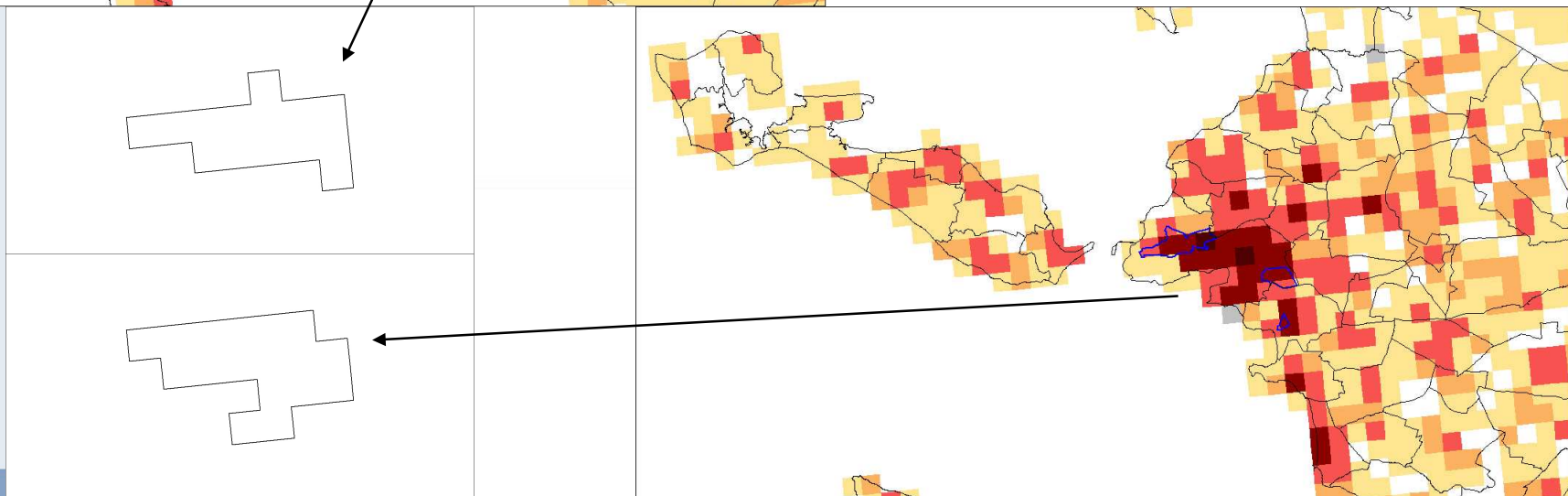
JRC 2006 estimation



DG REGIO Urban centres :

**More than 50 000 inh.
in contiguous cells with
more than 1 500 inh. in each cell**

Census 2007





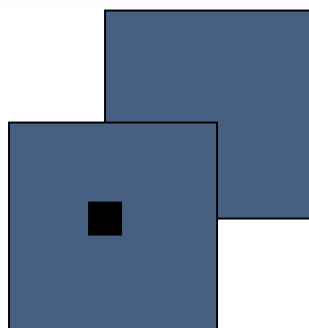
The effect of the grid projection system

Shifting the grid

	original LAEA 1km ²	Shifted LAEA 1km ²
Poitiers	61766	62947
La Rochelle	68802	65840
Angoulême	35797	45292
Niort	43714	39060
Châtellerault	20685	20862
Saintes	15094	14219

Populations of the urban centres
(simulation with fiscal population 2009)

Ordering is grid dependent
Accuracy is not guaranteed

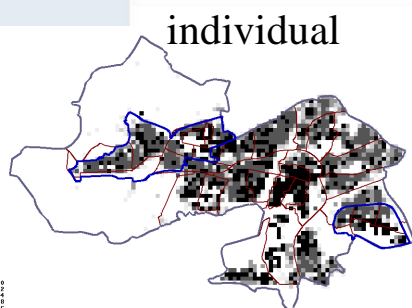


The effect of the grid size

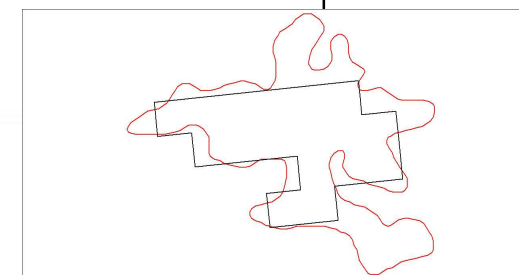
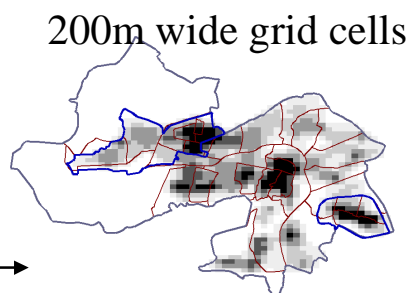
Using individual data

	LAEA 1km ²	LAEA 1km ² shifted	in : Individual out: L2E (200m) ²
Poitiers	61766	62947	72900
La Rochelle	68802	65840	86200
Angoulême	35797	45292	50600
Niort	43714	39060	44600
Châtellerault	20685	20862	23300
Saintes	15094	14219	16500

Now over the 50 000 inh. threshold

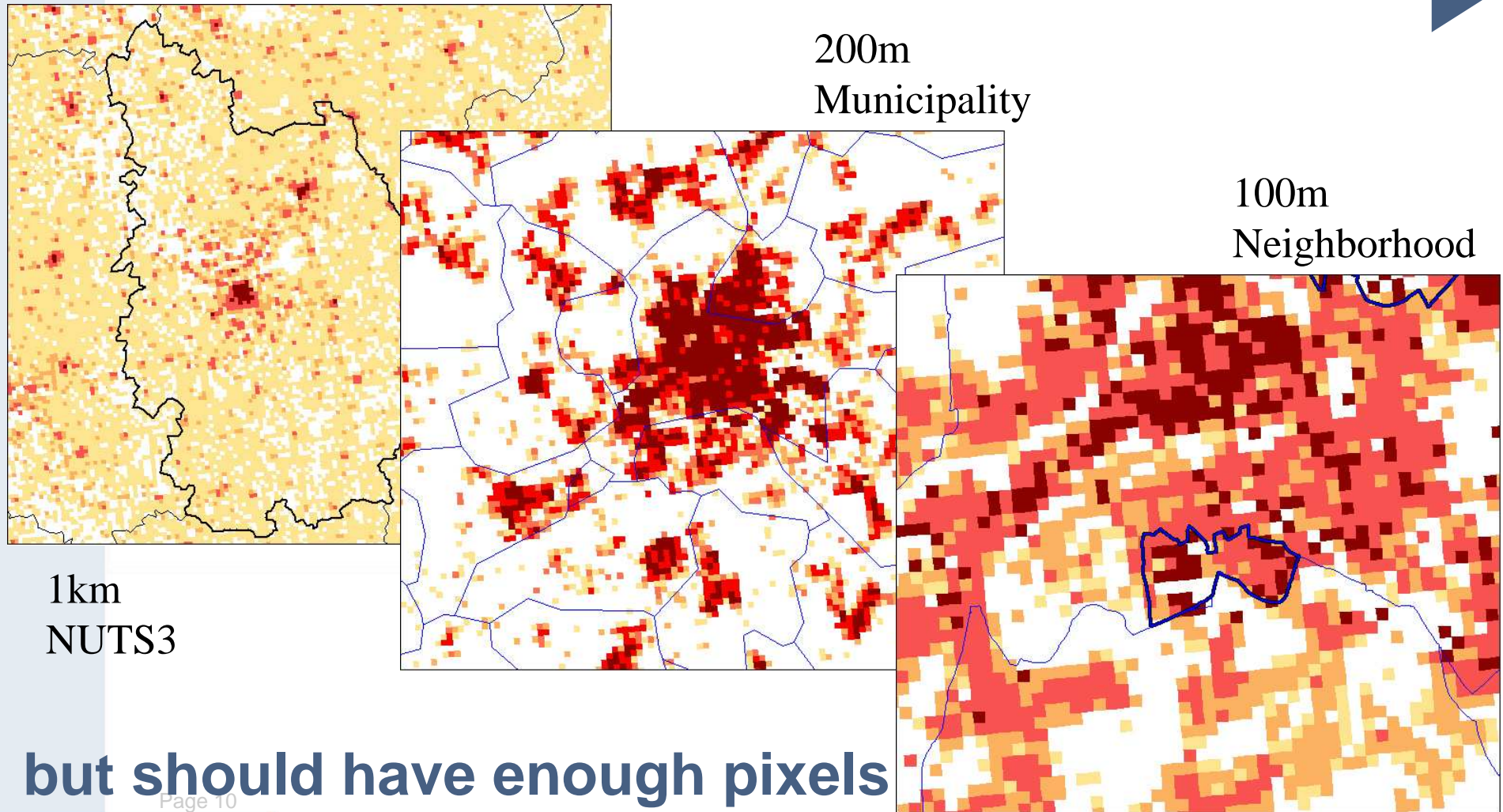


$$\hat{f}(x) = \sum_{i=1}^N \frac{1}{Nh} K\left(\frac{x - X_i}{h}\right)$$



Grid cells are pixels

The picture is important...



Page 10



Consequences for dissemination

- › We shall need more variable than just population counts
- › Target cell size must be 200m or lower : most cells will encounter confidentiality problem
 - Masking data will destroy anything
- › It is the global picture that is important : Real data for each cell is not necessary
 - ➔ geographical swapping and imputation
 - ➔ the way to dissemination of files of individual records is open



Dissemination

Scrambling the data

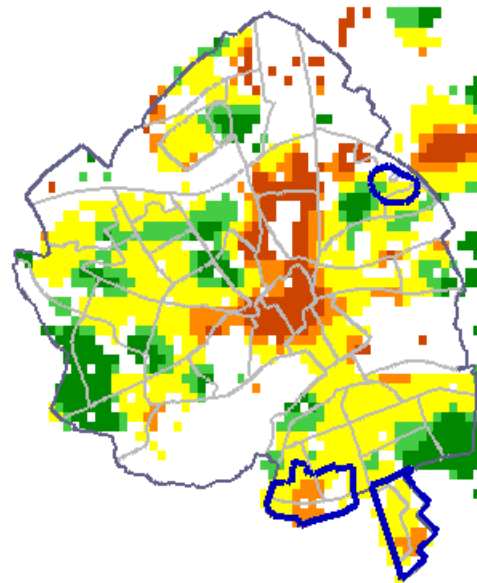
id	n	SEXE_1	SEXE_2	AGE_1	AGE_2	AGE_3
00134	1	1	1	0	0	0
00135	1	1	1	0	0	1
00222	20	8	12	3	13	4
00308	11	8	3	3	8	0
00309	12	7	5	0	11	1
00394	3	2	1	0	1	2
00395	3	1	2	1	0	2
00473	1	0	1	0	1	0
00474	3	1	2	0	3	0

After treatment

id	n	SEXE_1	SEXE_2	AGE_1	AGE_2	AGE_3
00134	1	0	1	0	0	1
00135	1	0	1	0	1	0
00222	20	11	9	4	12	4
00308	11	6	5	2	9	0
00309	12	6	6	0	11	1
00394	3	3	0	0	1	2
00395	3	1	2	0	1	2
00473	1	0	1	0	1	0
00474	3	2	1	0	3	0

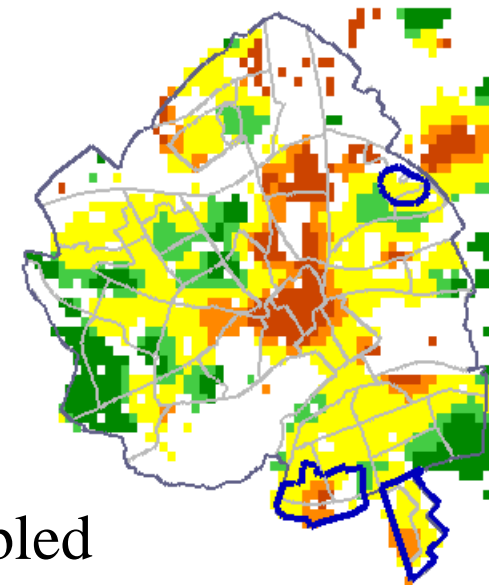
Scrambled but still usable

original



a - Surreprésentation age_1/n 0.81 << >> 1.25

Municipality of Caen
Young employees residence place
(kernel density analysis)



a - Surreprésentation age_1/n 0.80 << >> 1.23

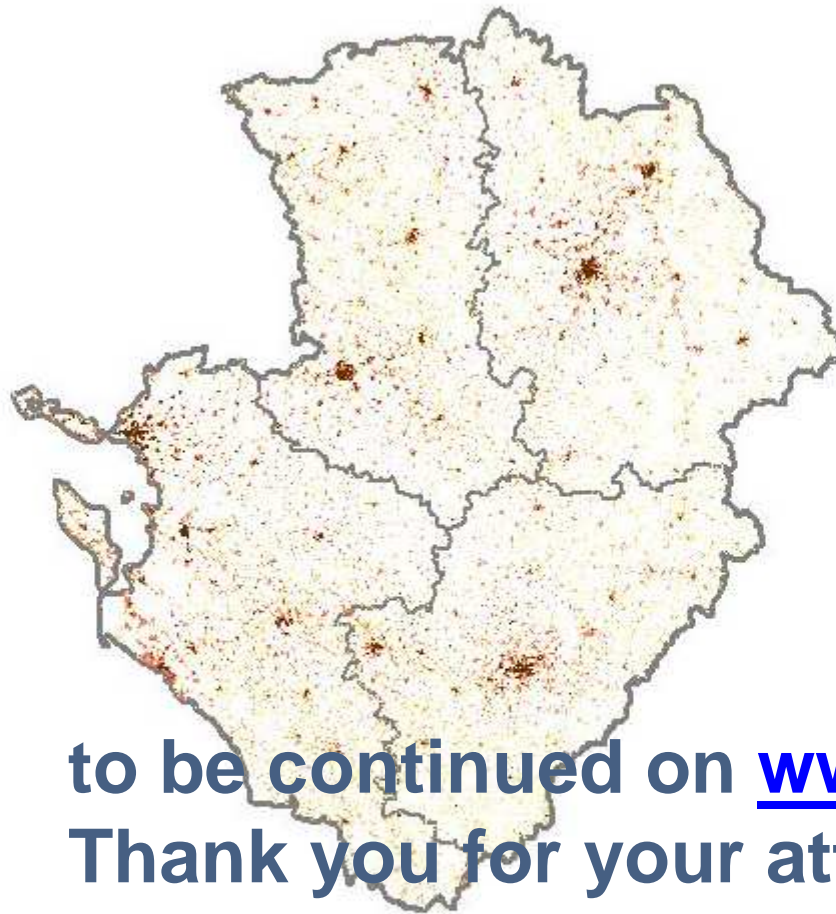


Conclusions

- › If you want, you can
- › Having smoothed data is also an advantage
- › The Geostat projects are not ambitious enough.

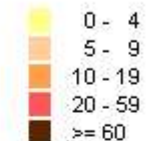
- ☐ Agriculture
- ☐ Commerce
- ☐ Comptes nationaux - Finances publiques
- ☐ Conditions de vie - Société
- ☐ Conjoncture
- ☐ Économie
- ☐ Enseignement - Éducation
- ☐ Entreprises
- ☐ Industrie - IAA - Construction
- ☐ Population
- ☐ Revenus - Salaires
- ☐ Santé
- ☐ Services - Tourisme - Transports
- ☐ Territoire
 - + Pays, villes d'Europe et du monde
 - ☐ Régions, départements et villes de France
 - + Environnement
- ☐ Travail - Emploi

■ Poitou-Charentes



:: Légende

Densité de population
Nombre d'habitants estimés
par carreaux de 200 m



:: Pour en savoir plus

- ☐ Documentation sur les données carroyées

:: Liens

- ☐ Changer de région

to be continued on www.insee.fr...
Thank you for your attention

Source : Insee, RFL 2009.

Carte : carreaux de 200m sur 200m

:: Téléchargement des données

Chaque fichier compacté (format zip) contient les données sous deux formes :

- Un fichier en format dBase (DBF),
- Un fond de carte en format de transport MapInfo (MIF/MID).